

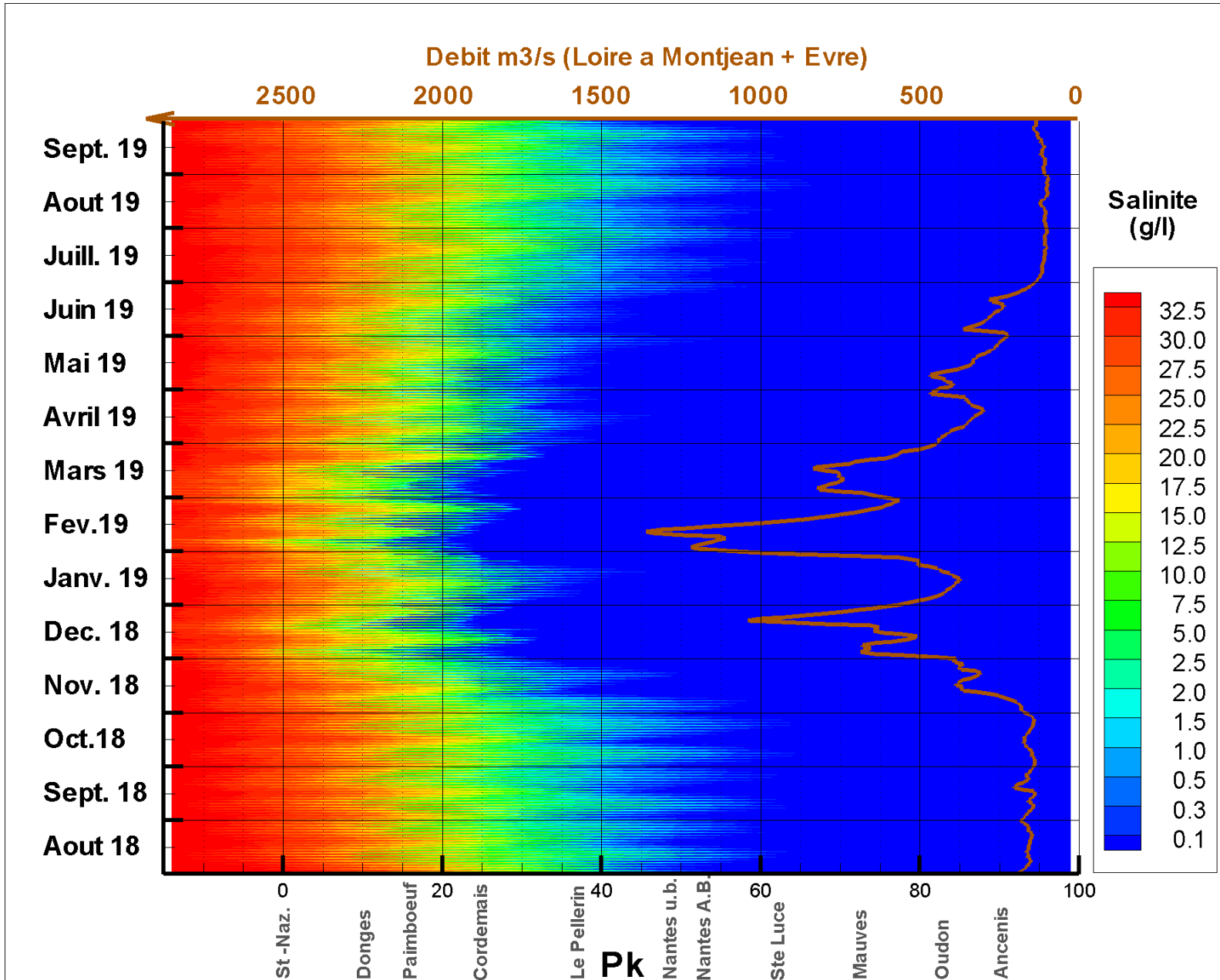


MODÈLE 3D HYDROSÉDIMENTAIRE ET DE QUALITÉ DES EAUX DE LA LOIRE

**ANNEXE 6 – CALAGE ET VALIDATION DE LA DYNAMIQUE EN
SALINITÉ, MES ET CRÈME DE VASE SUR L'ANNÉE
HYDROLOGIQUE 2018-2019**

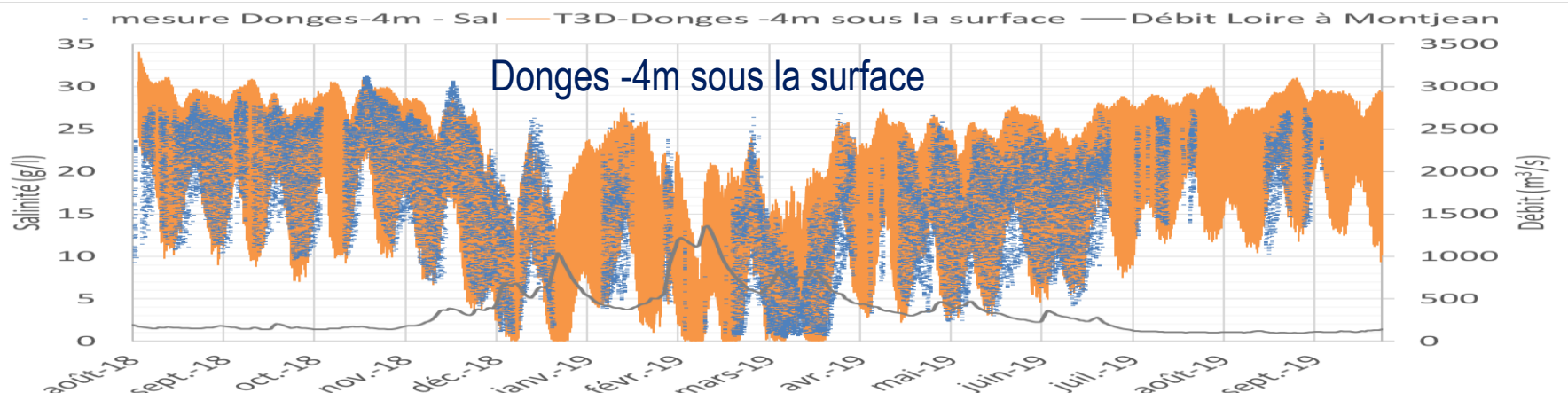
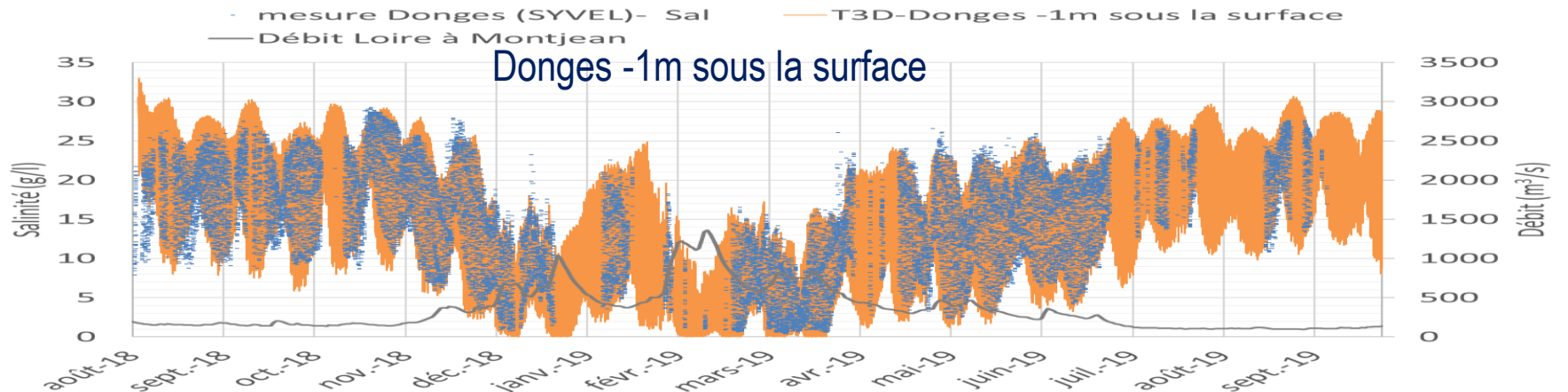
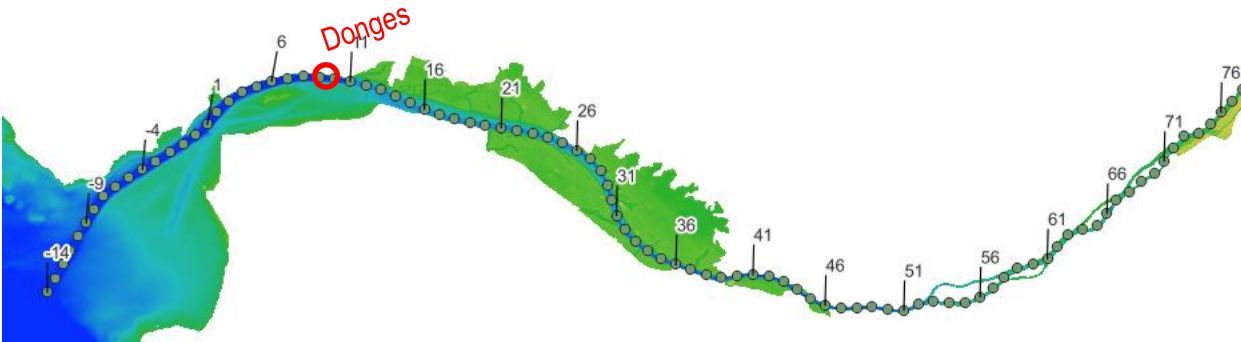
Année hydrologique 2018-2019 - Estuaire interne

Dynamique Haline



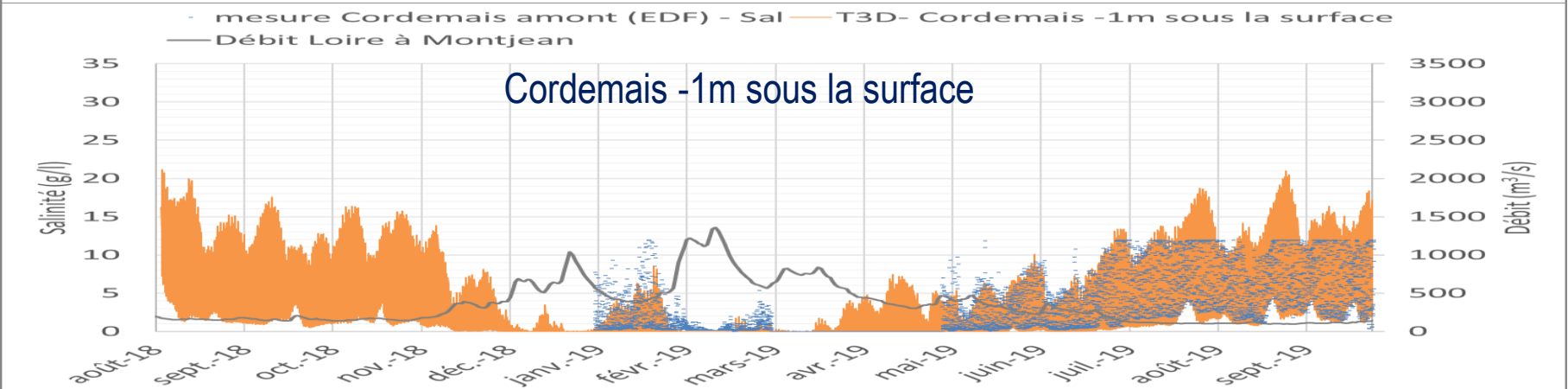
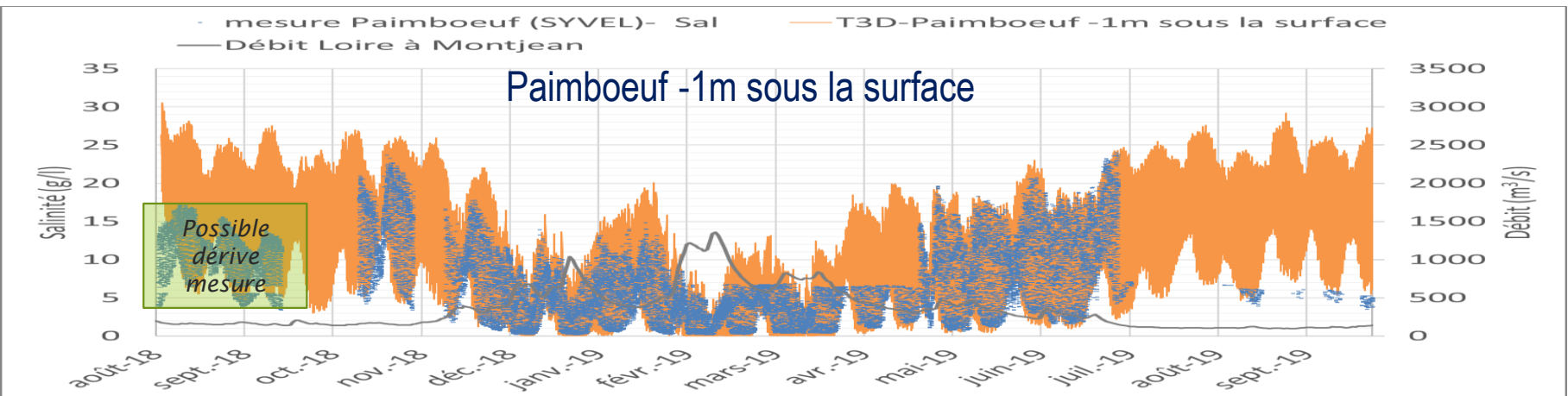
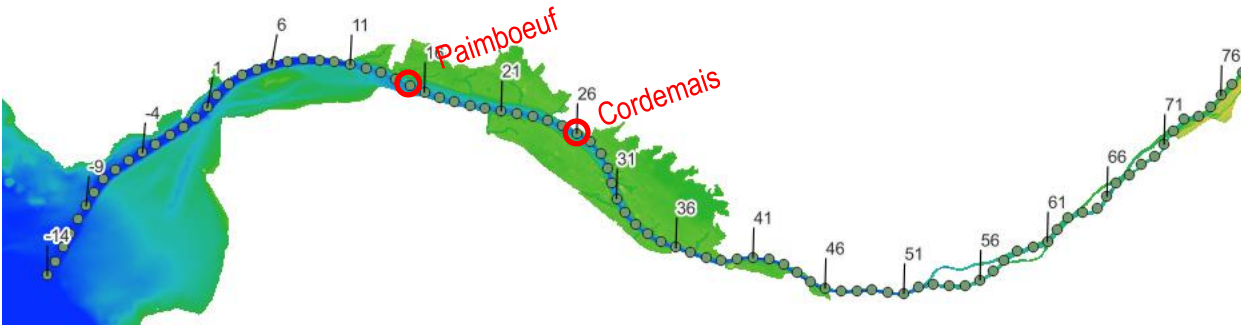
Année hydrologique 2018-2019 - Estuaire interne

Comparaison aux mesures SYVEL de salinité



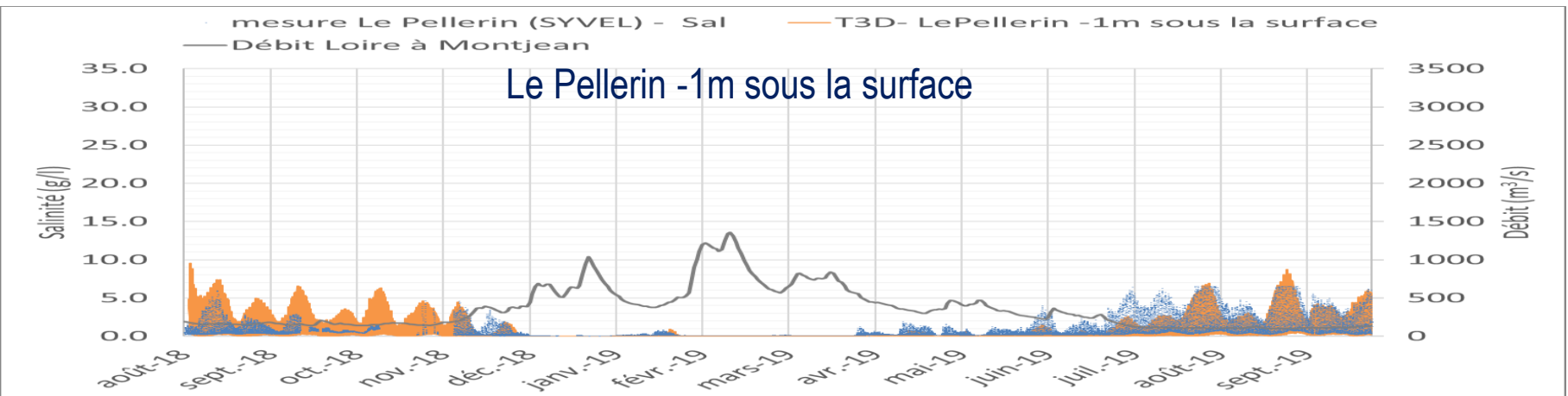
Année hydrologique 2018-2019 - Estuaire interne

Comparaison aux mesures SYVEL de salinité



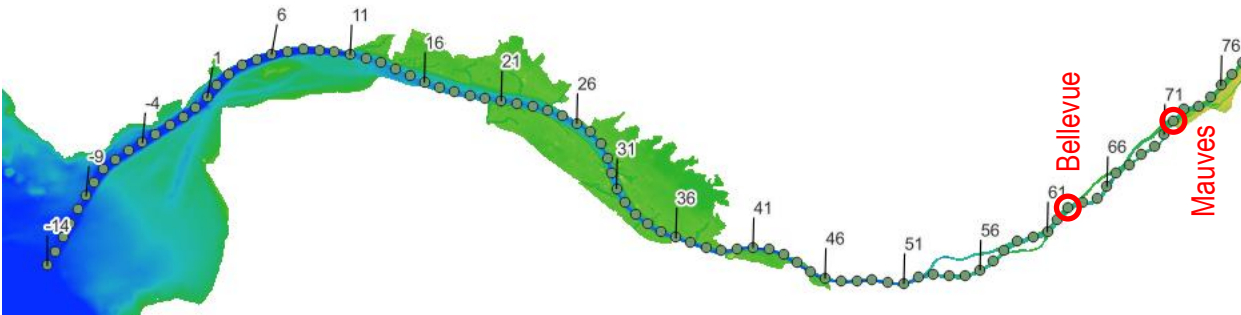
Année hydrologique 2018-2019 - Estuaire interne

Comparaison aux mesures SYVEL de salinité



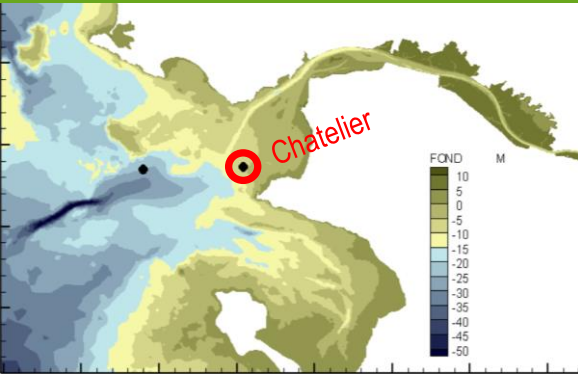
Année hydrologique 2018-2019 - Estuaire interne

Comparaison aux mesures SYVEL de salinité

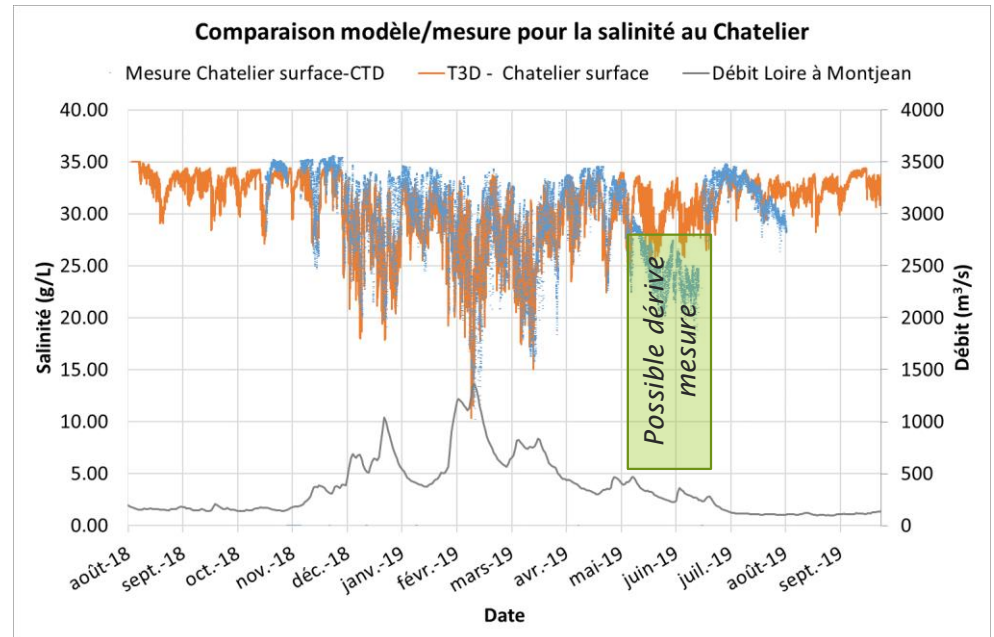


Année hydrologique 2018-2019 – Estuaire externe

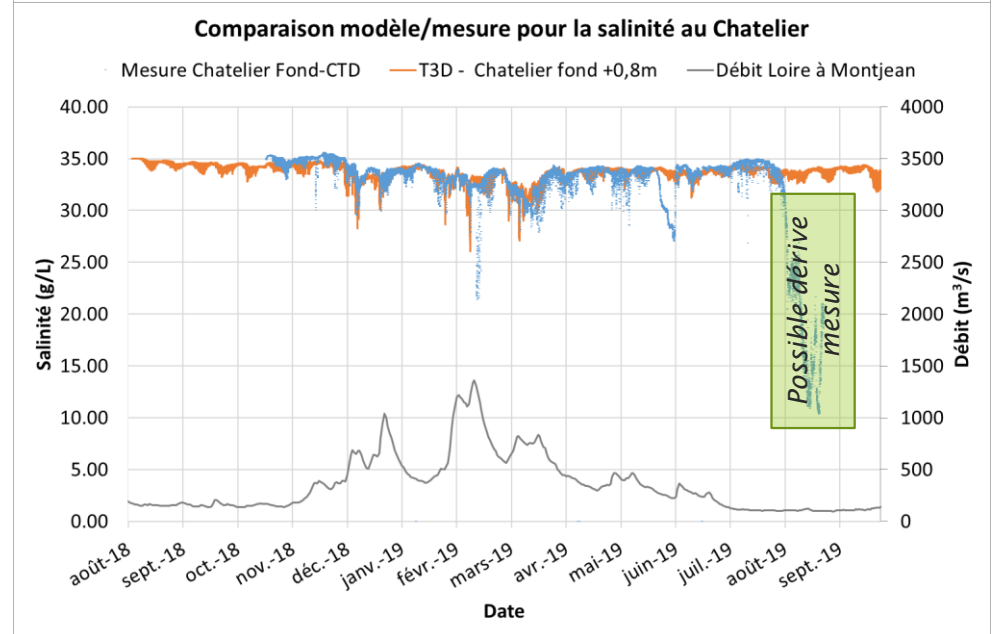
Comparaison aux mesures Chatelier en Salinité



Surface

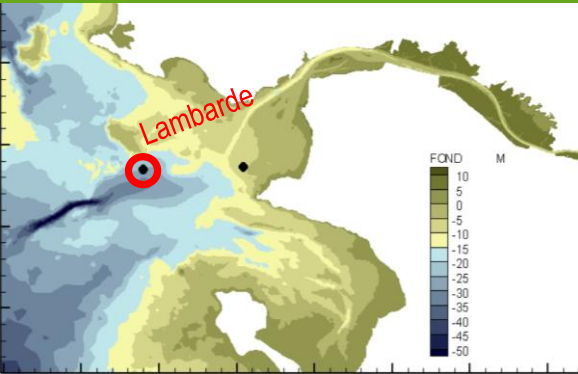


Fond

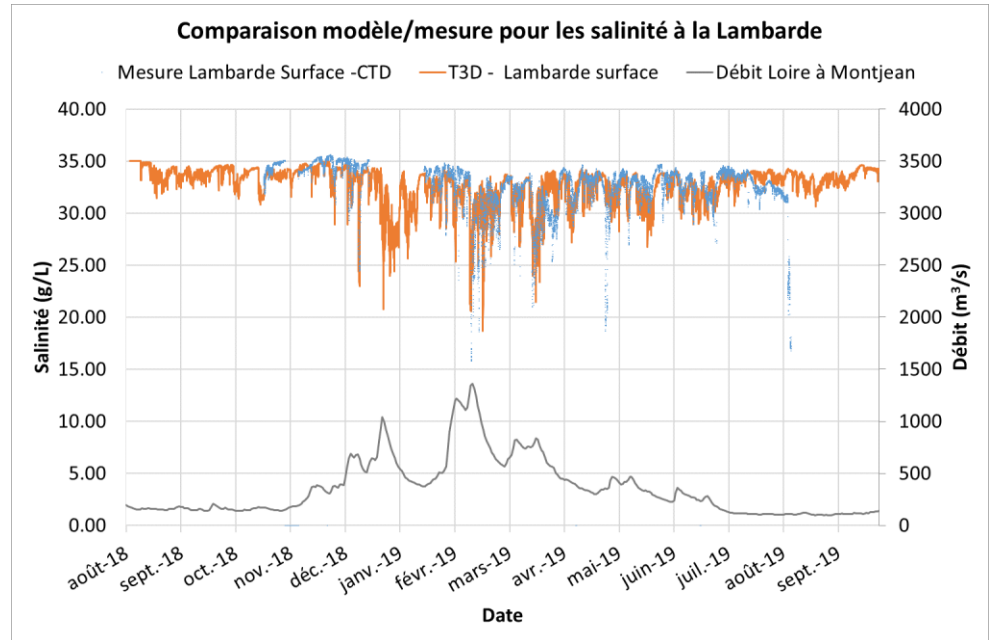


Année hydrologique 2018-2019 – Estuaire externe

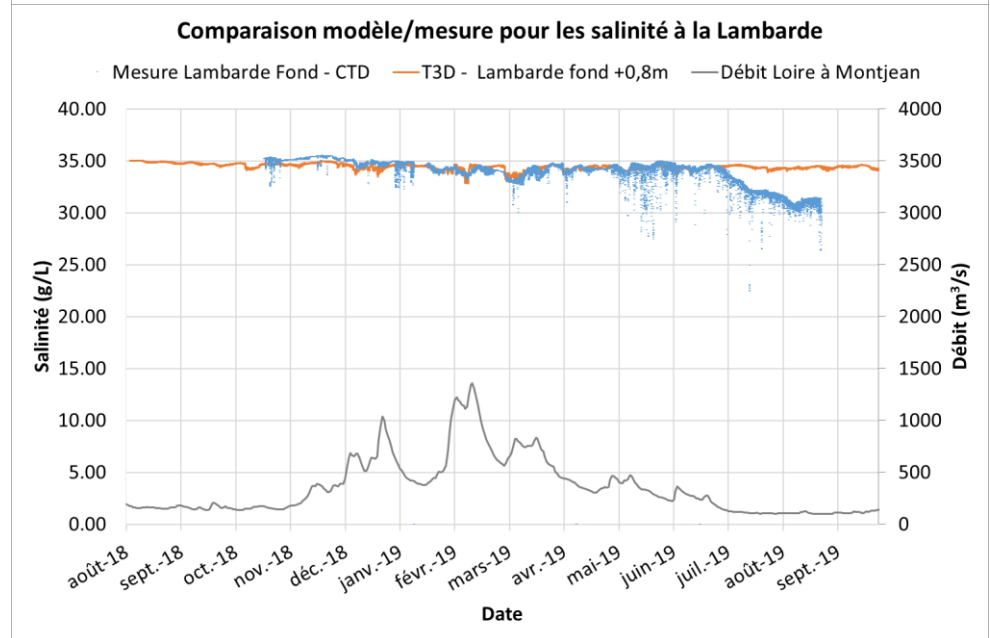
Comparaison aux mesures Lambarde en Salinité

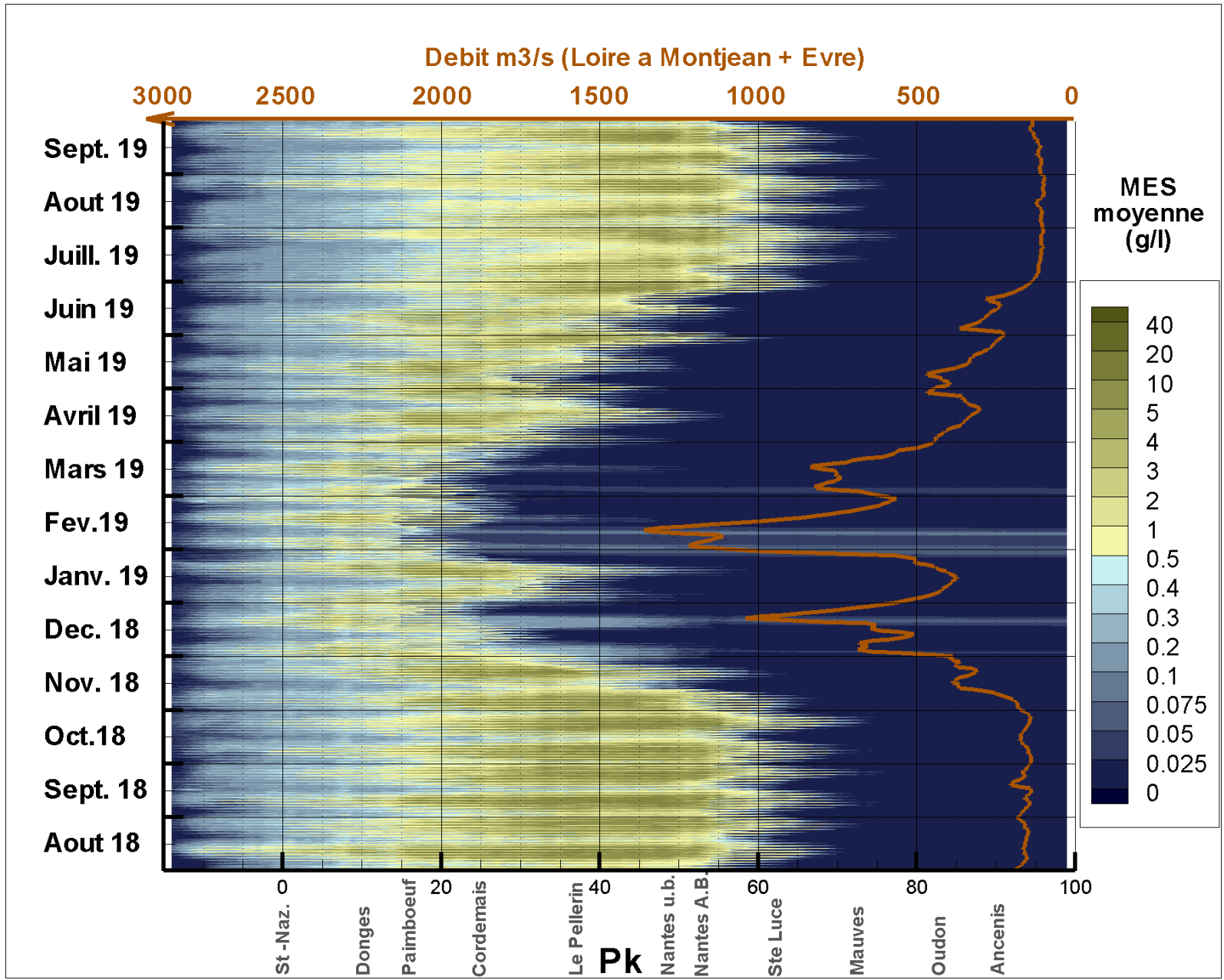


Surface



Fond



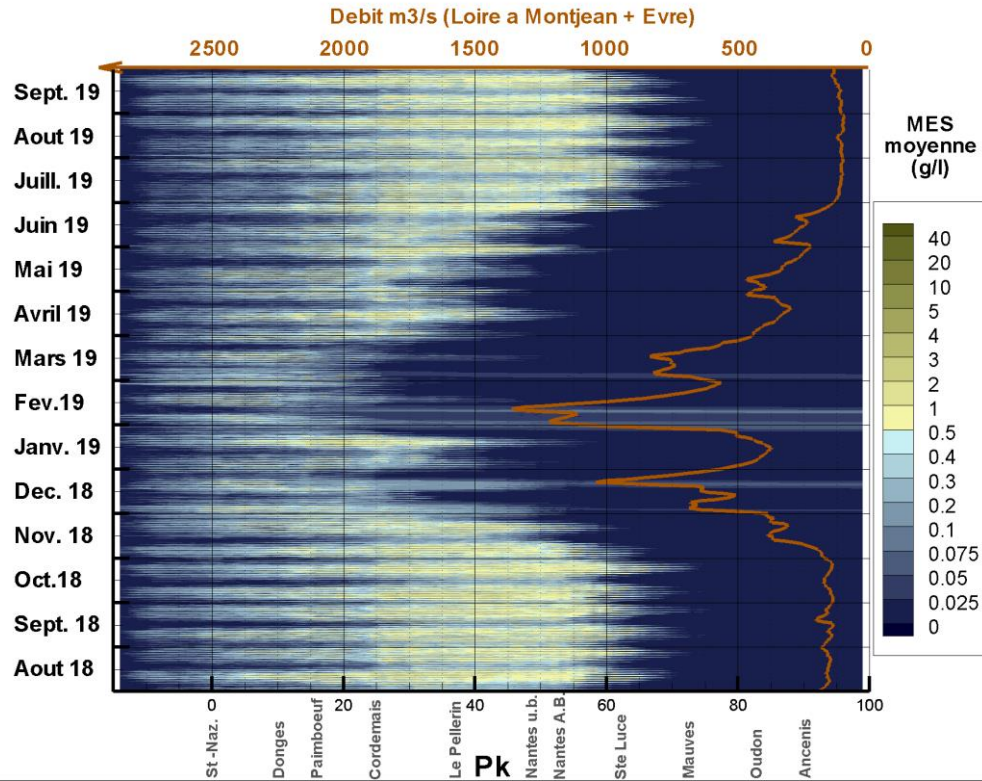
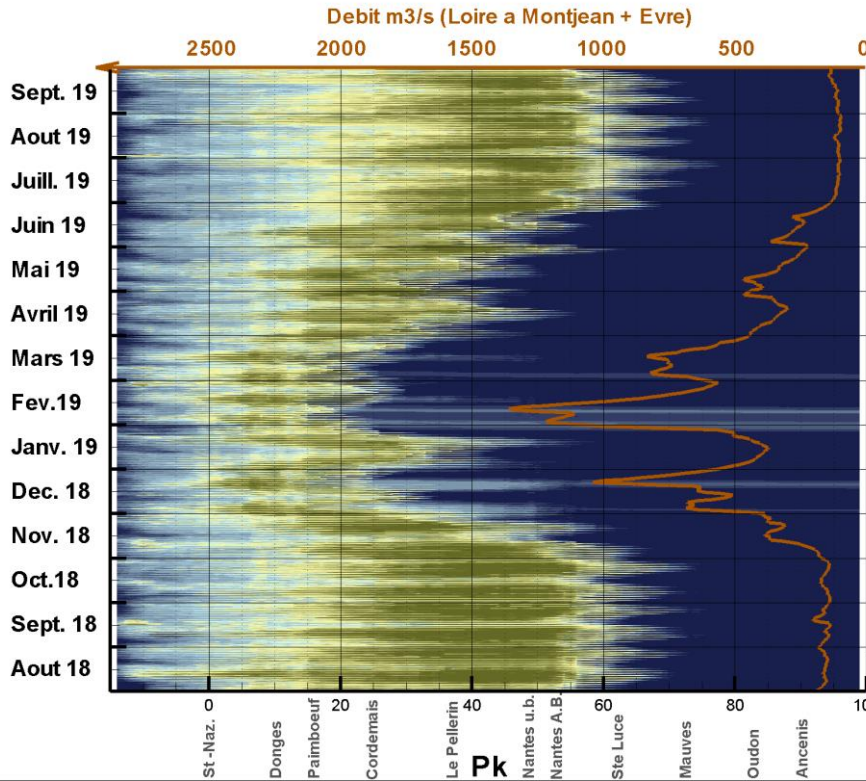


Année hydrologique 2018-2019 - Estuaire interne

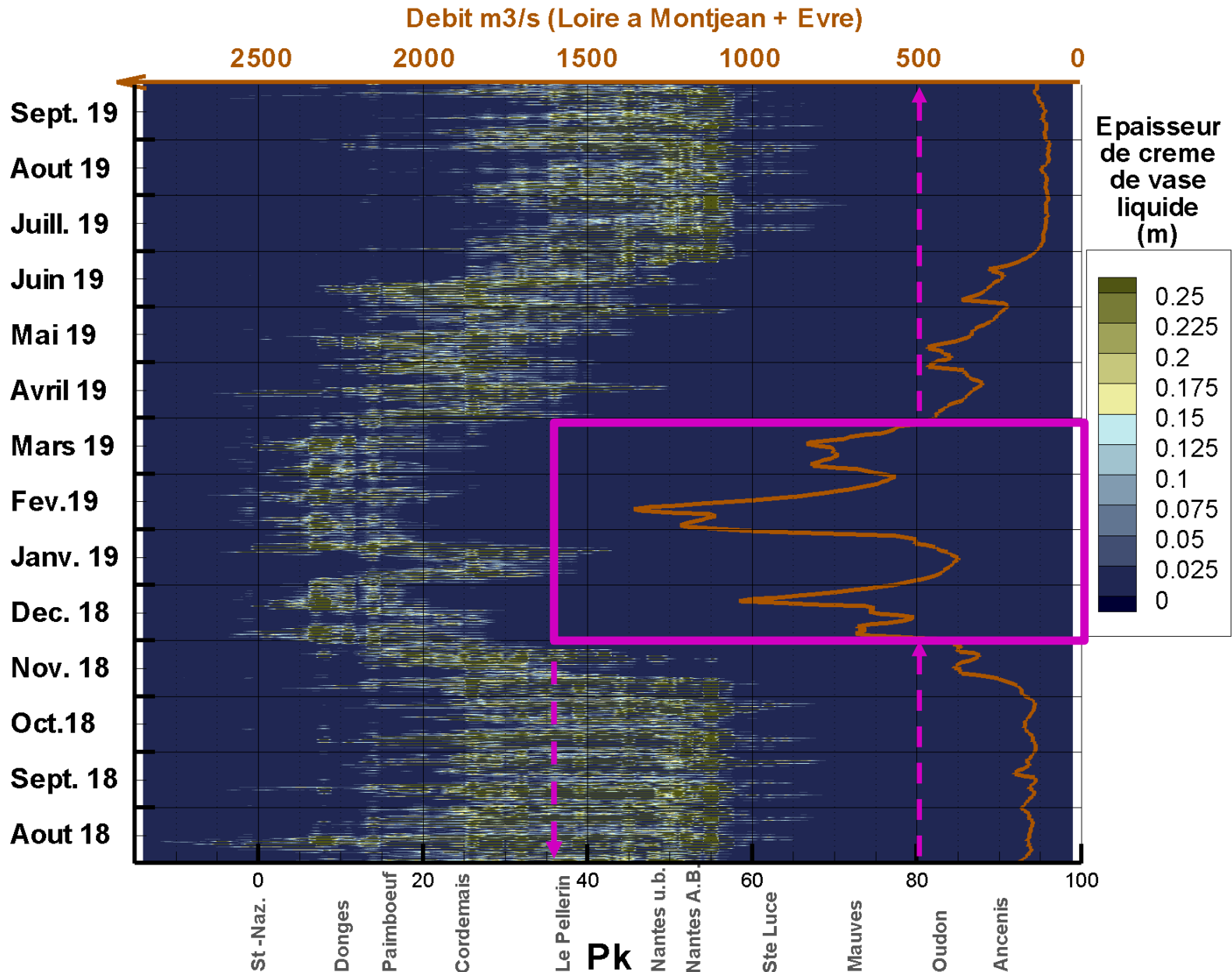
Dynamique de la MES

Fond

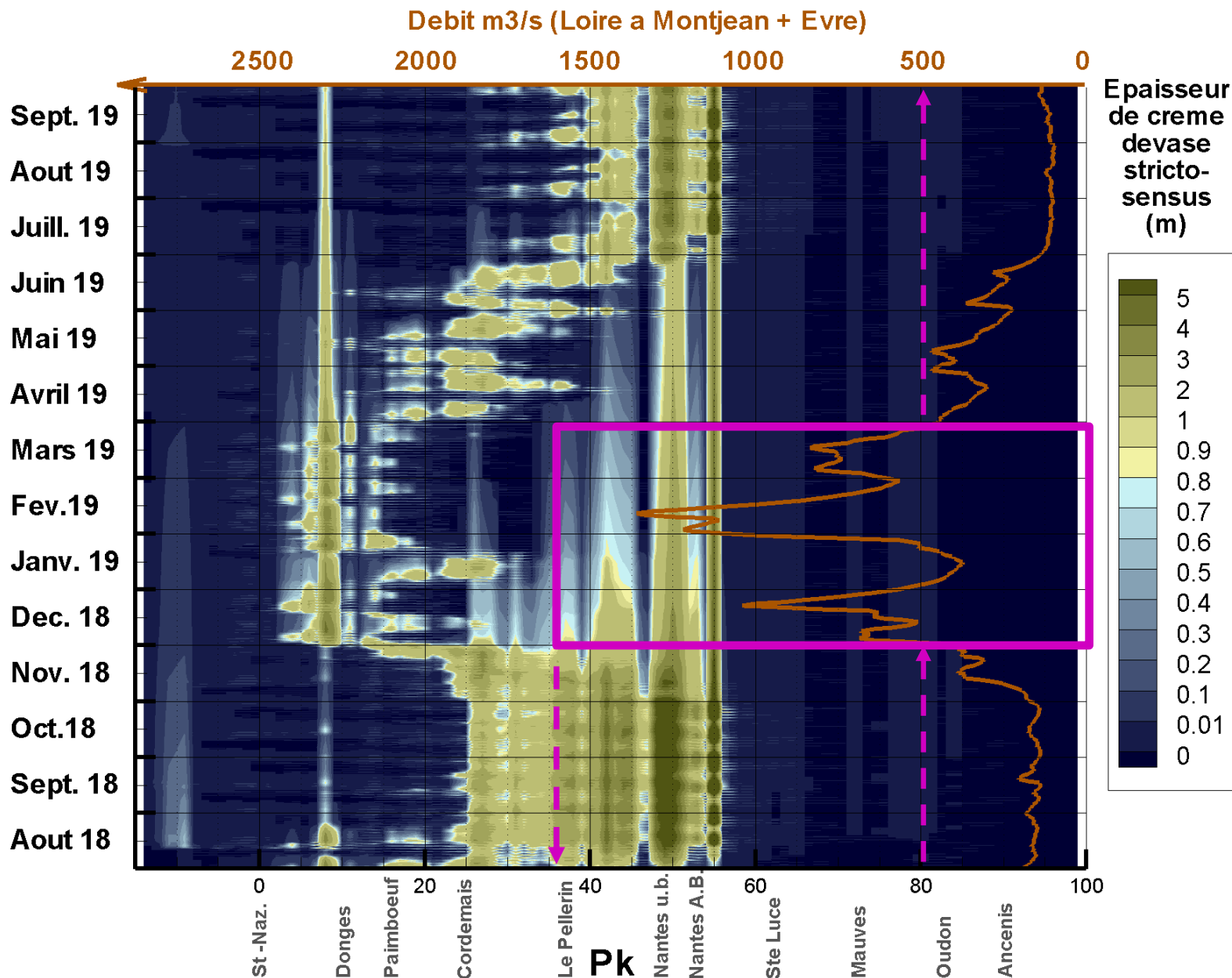
Surface



Epaisseur de la crème de vase liquide (40 à 100g/l)

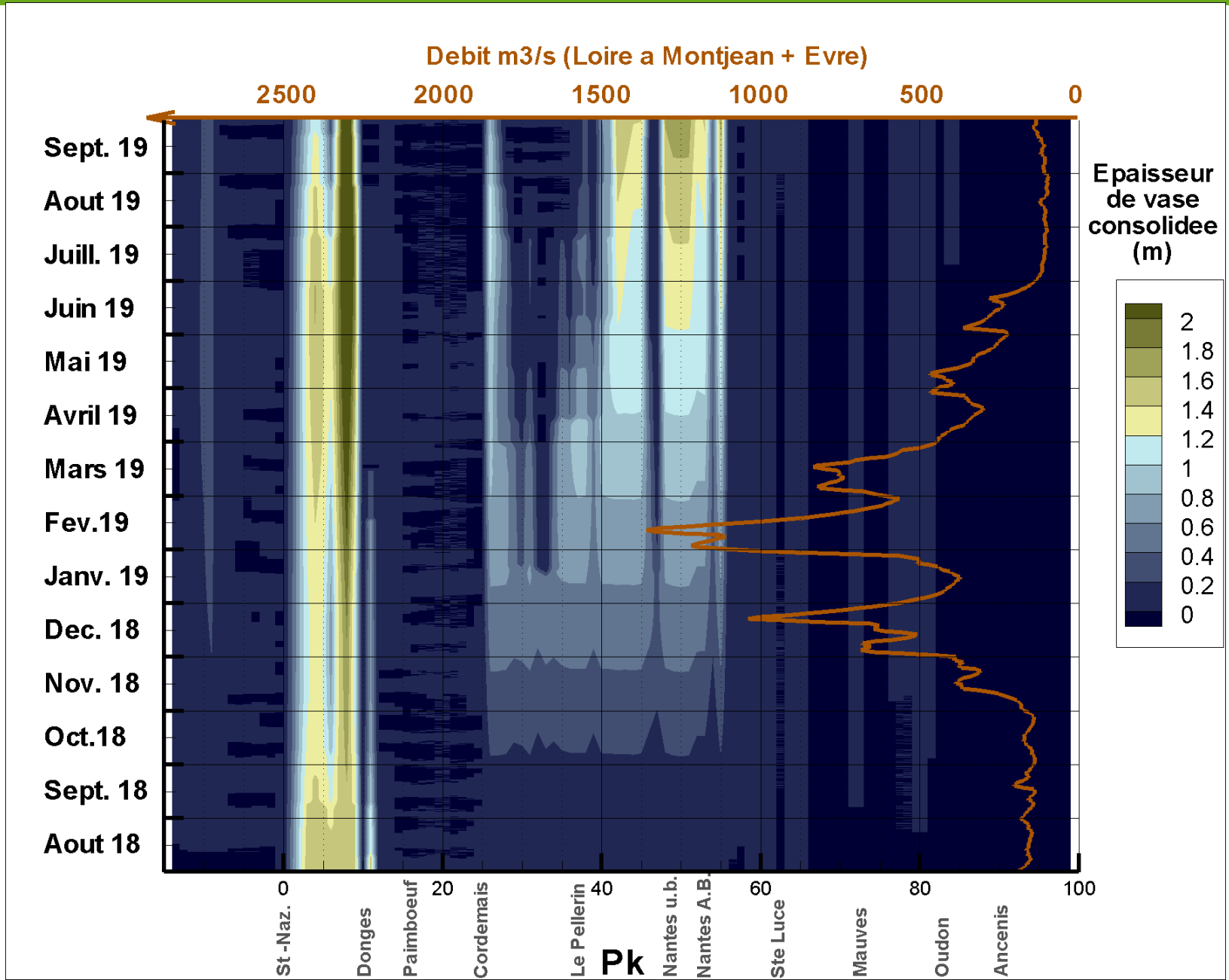


Epaisseur de la crème de vase stricto-sensus (100 à 300g/l)



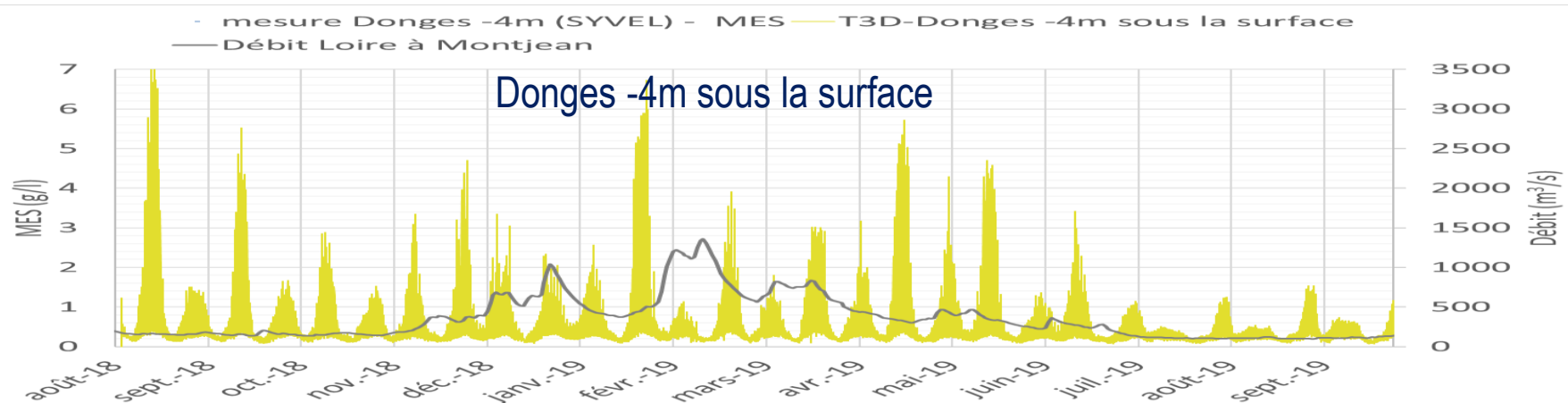
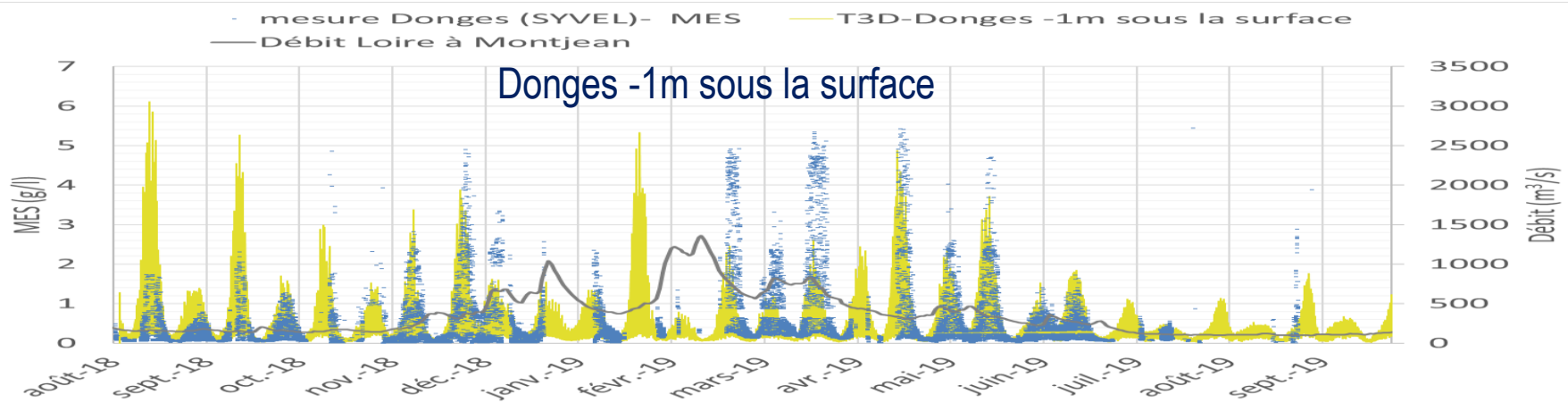
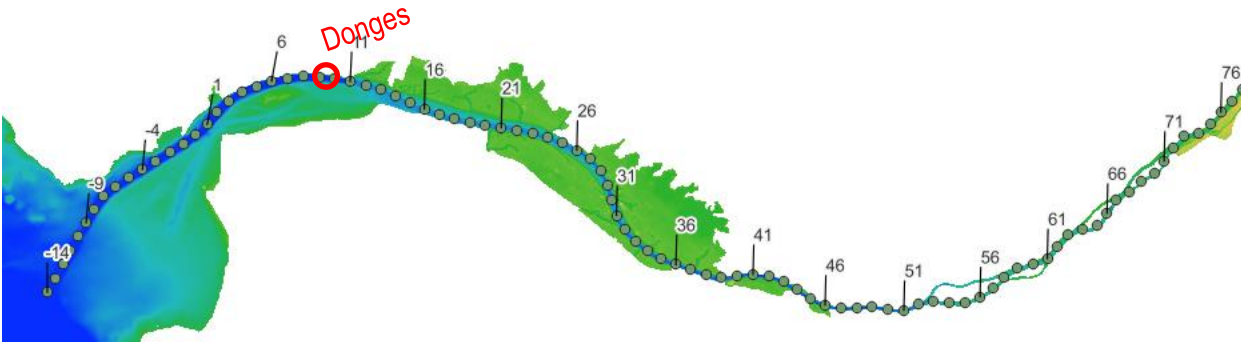
Dynamique de la crème de vase

Epaisseur de la crème de vase consolidée (300 à 375 g/l)



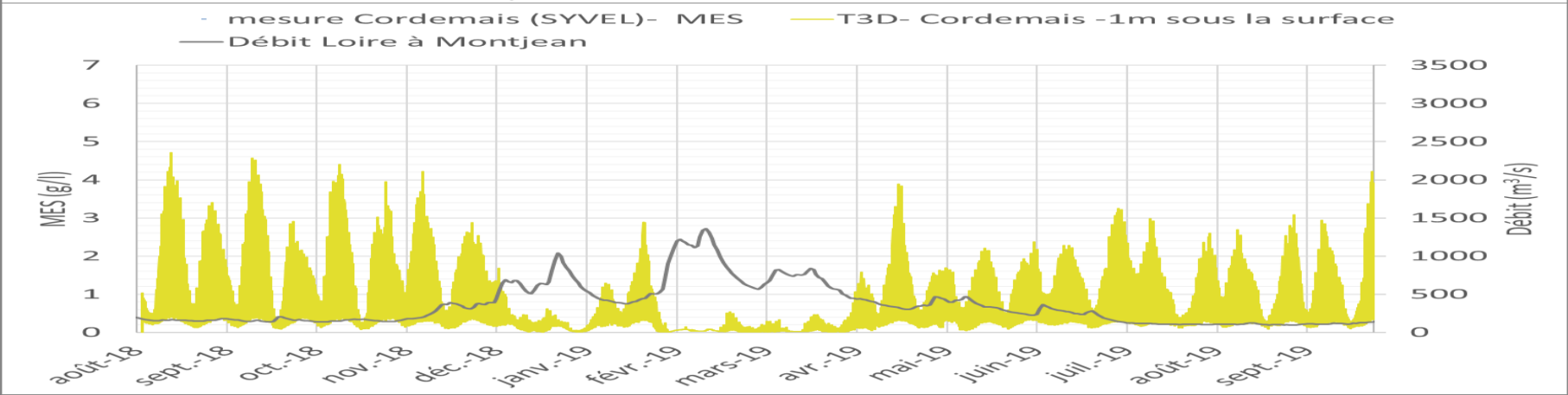
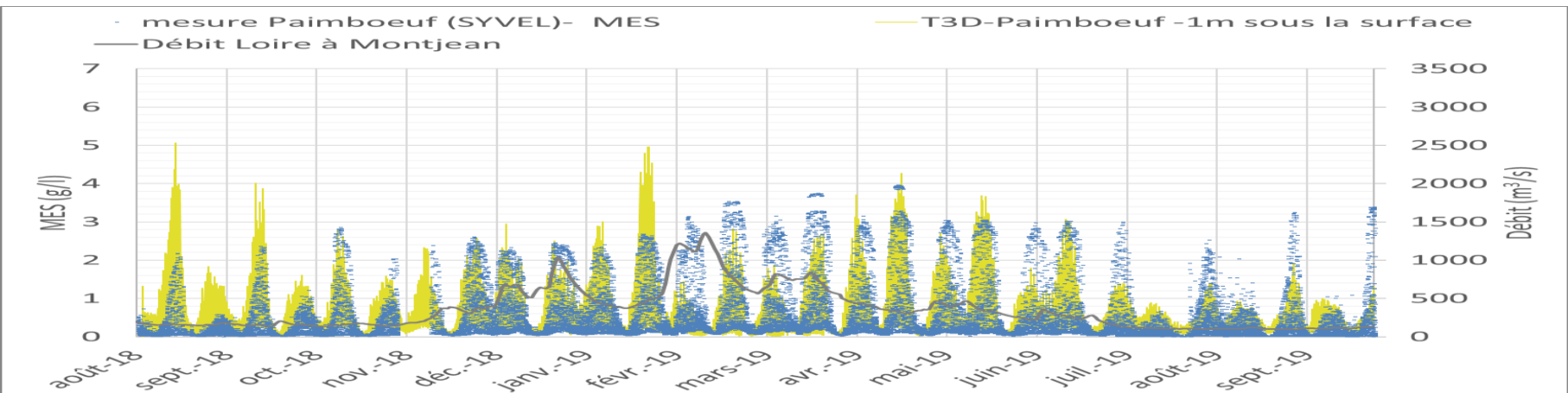
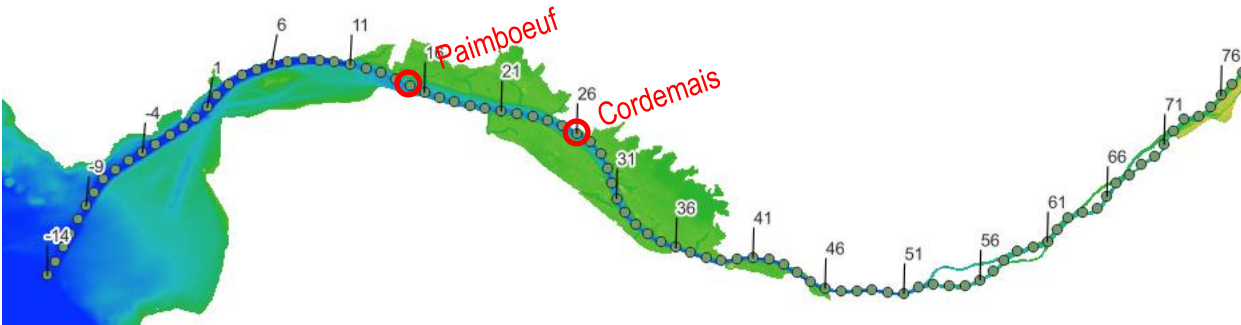
Année hydrologique 2018-2019 - Estuaire interne

Comparaison aux mesures SYVEL de MES



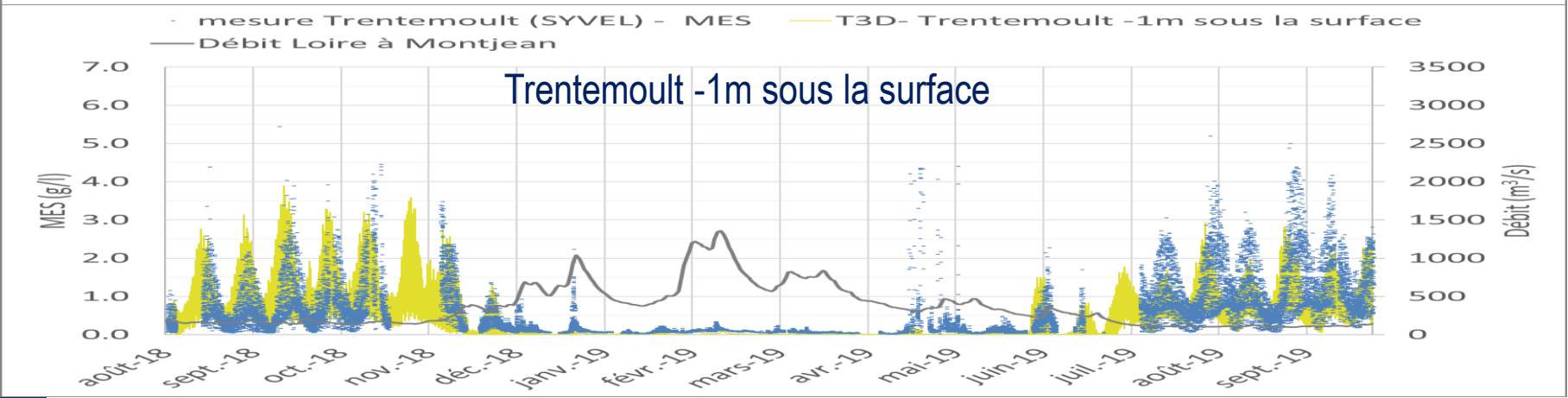
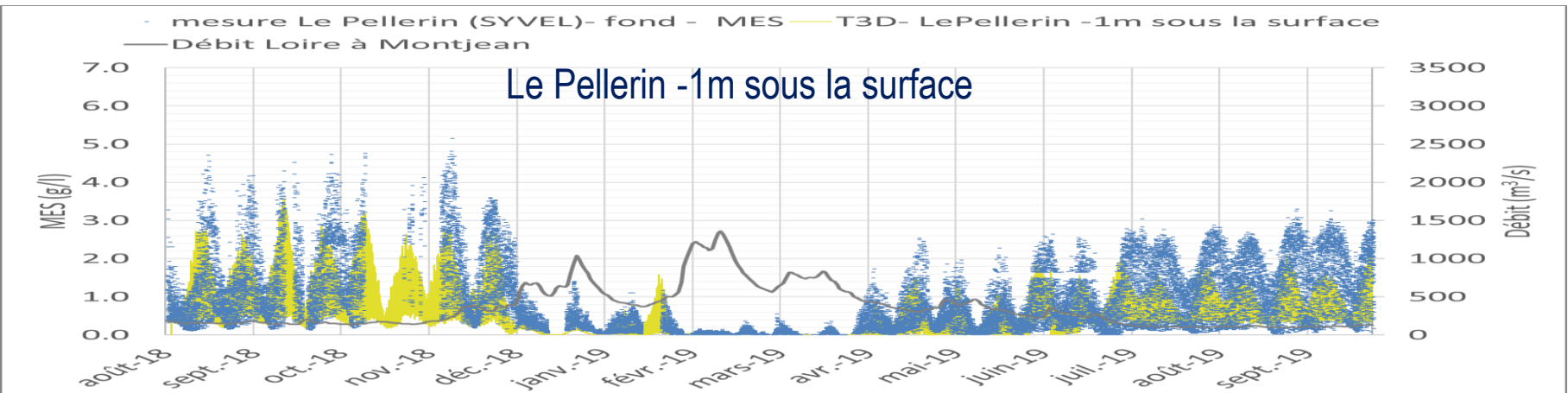
Année hydrologique 2018-2019 - Estuaire interne

Comparaison aux mesures SYVEL de MES



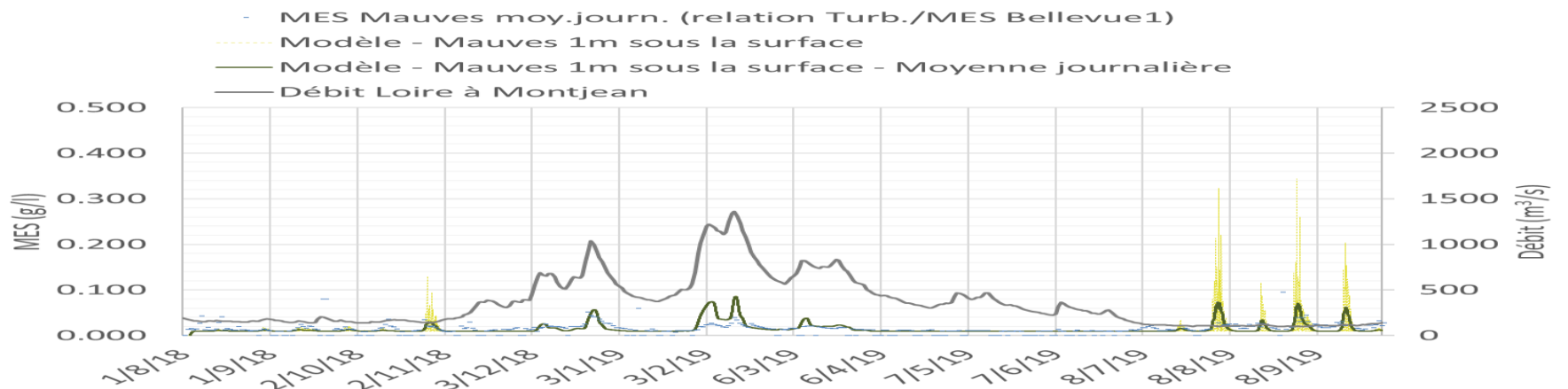
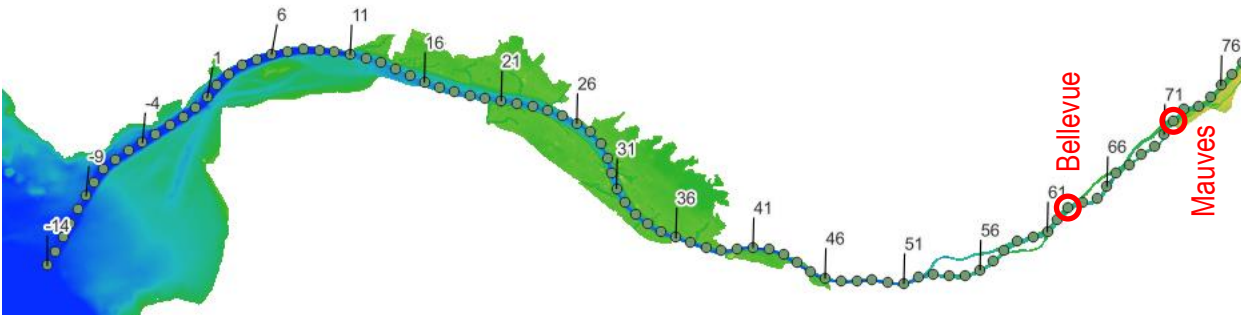
Année hydrologique 2018-2019 - Estuaire interne

Comparaison aux mesures SYVEL de MES



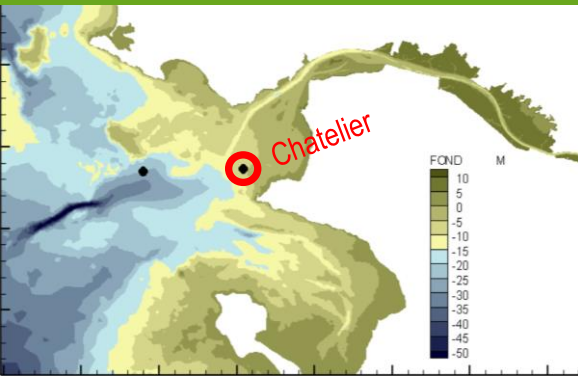
Année hydrologique 2018-2019 - Estuaire interne

Comparaison aux mesures SYVEL de MES

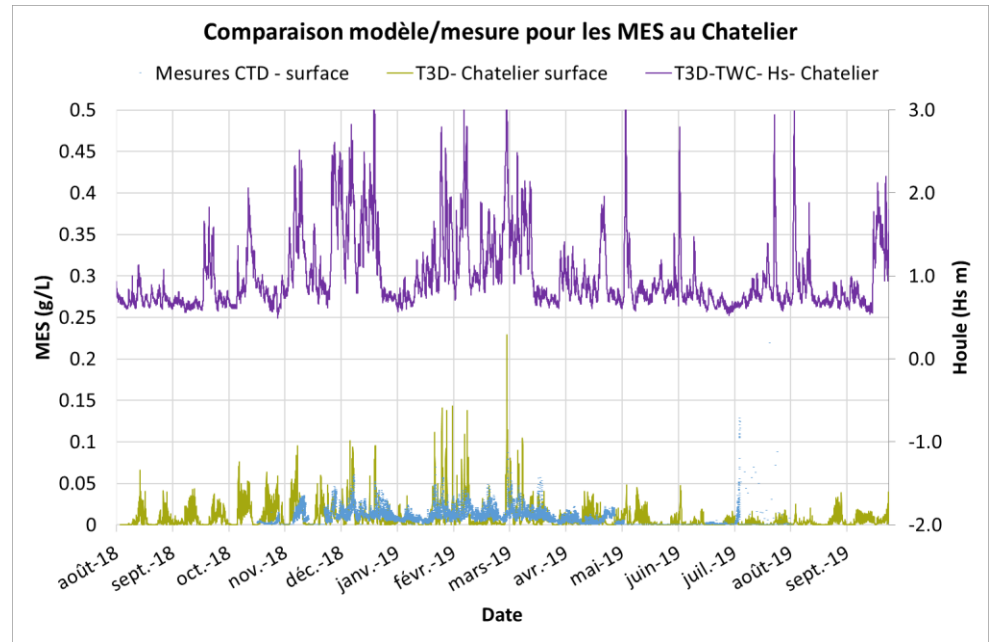


Année hydrologique 2018-2019 – Estuaire externe

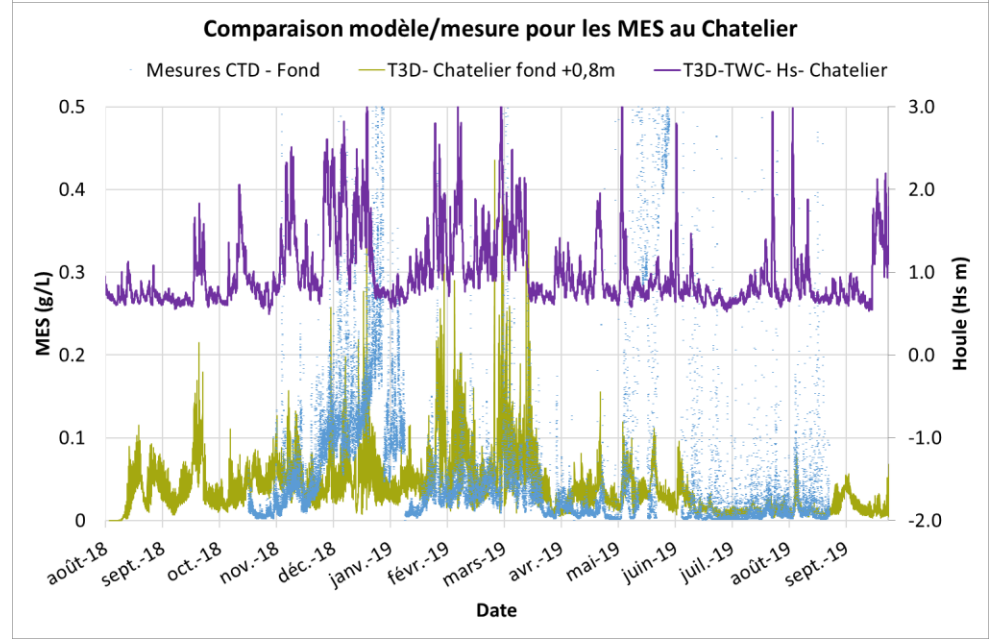
Comparaison aux mesures Lambarde et Chatelier en MES



Surface

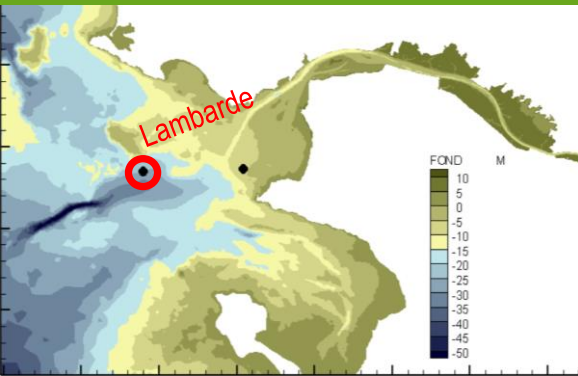


Fond

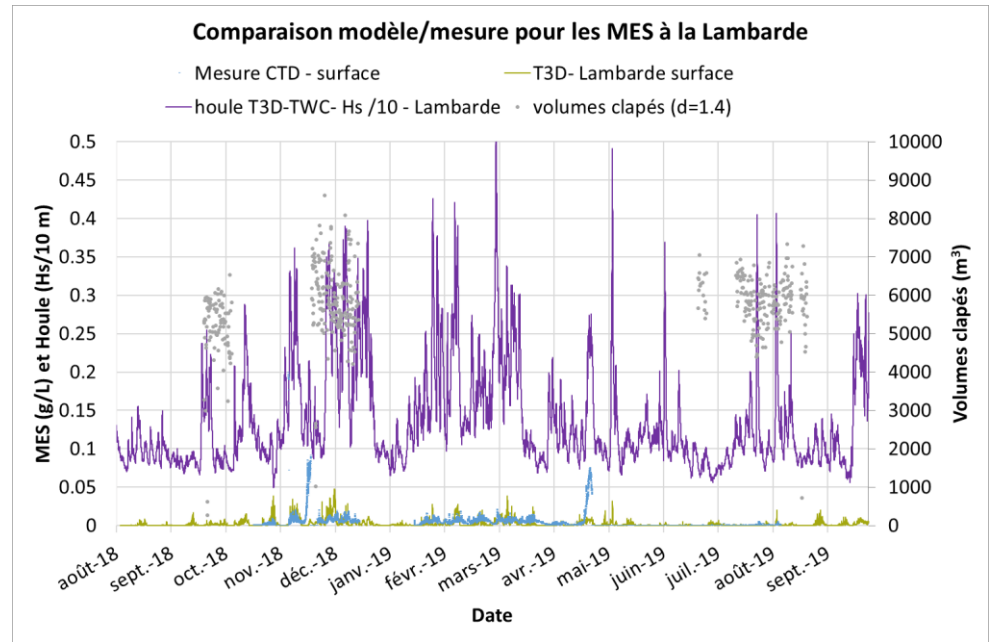


Année hydrologique 2018-2019 – Estuaire externe

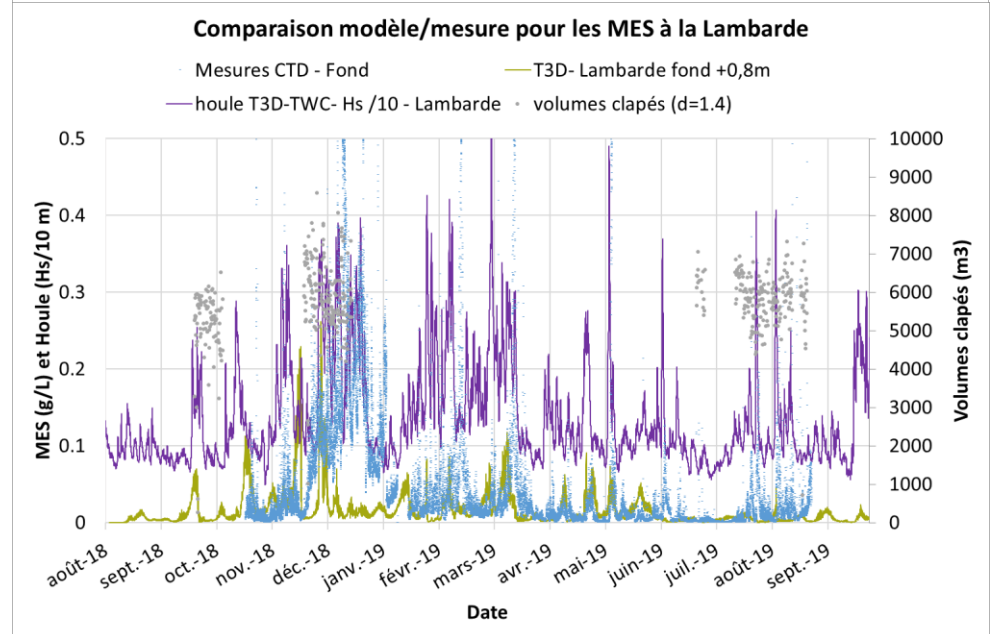
Comparaison aux mesures Lambarde et Chatelier en MES



Surface

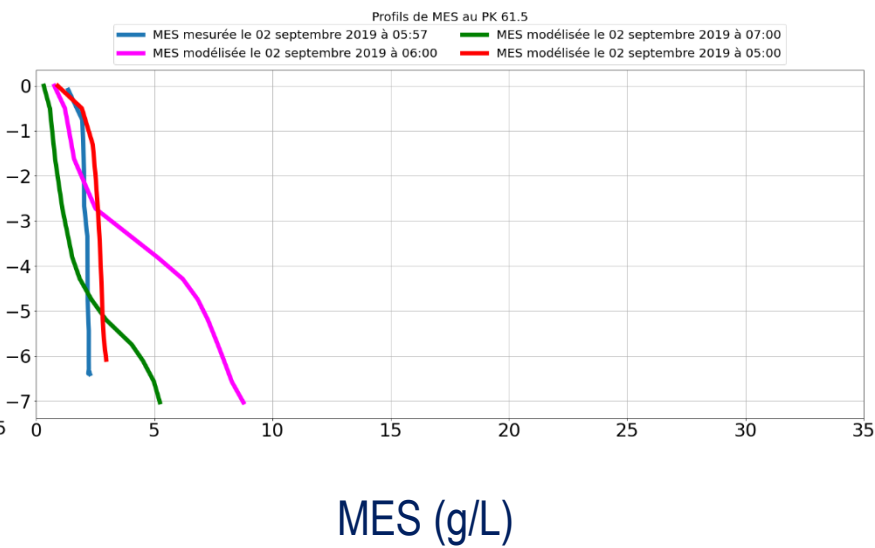
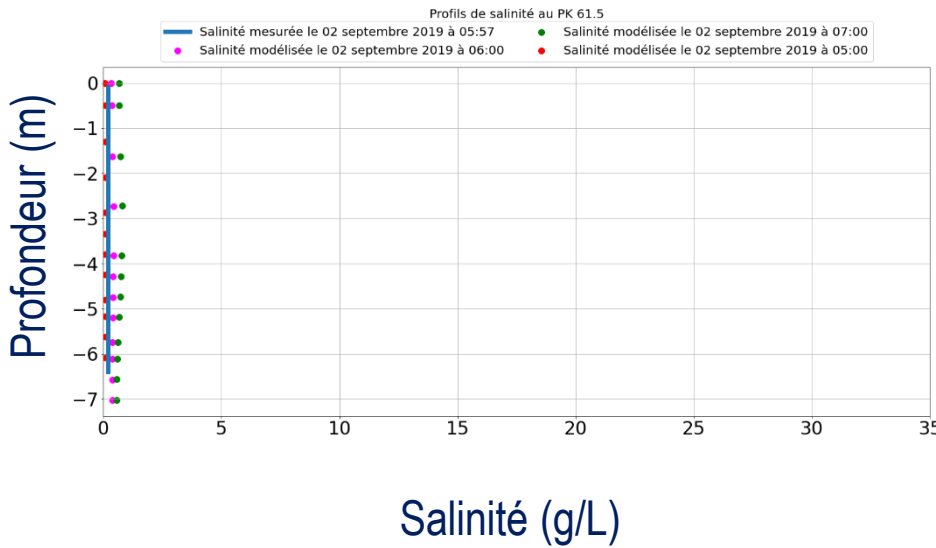


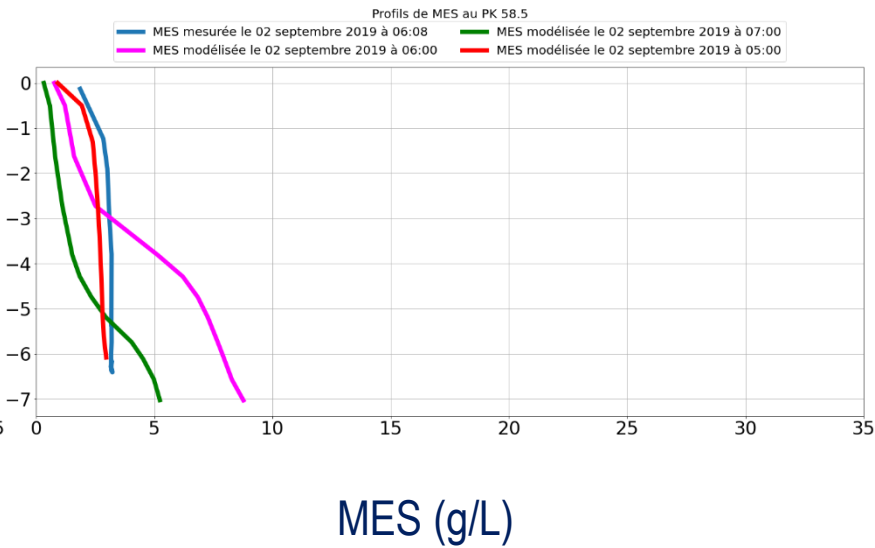
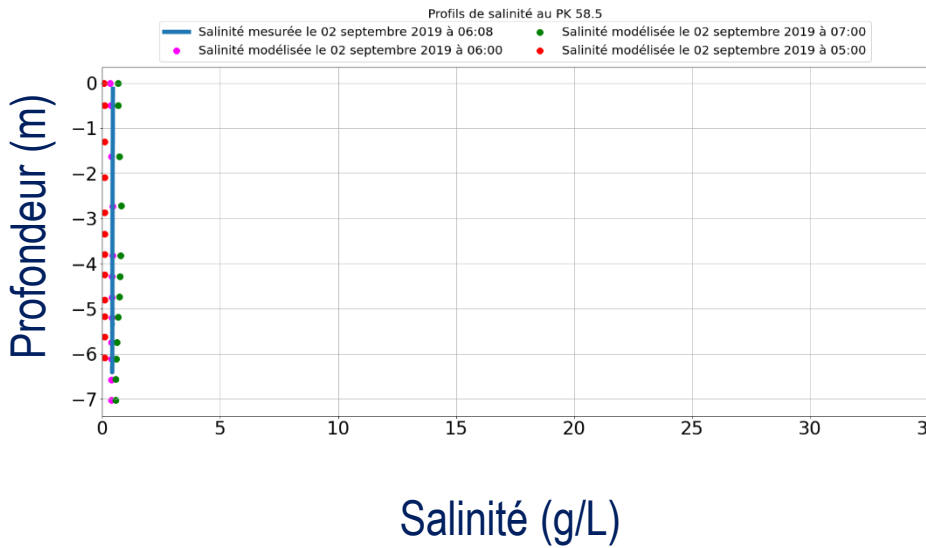
Fond

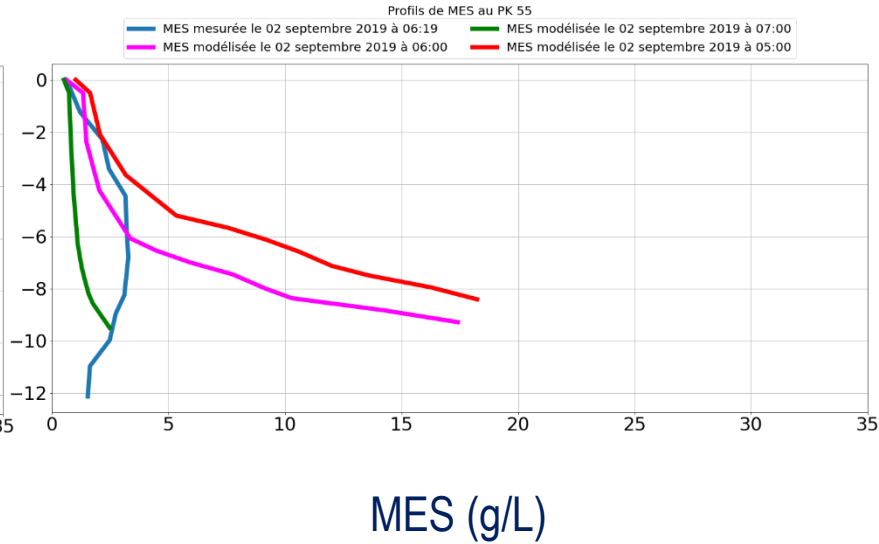
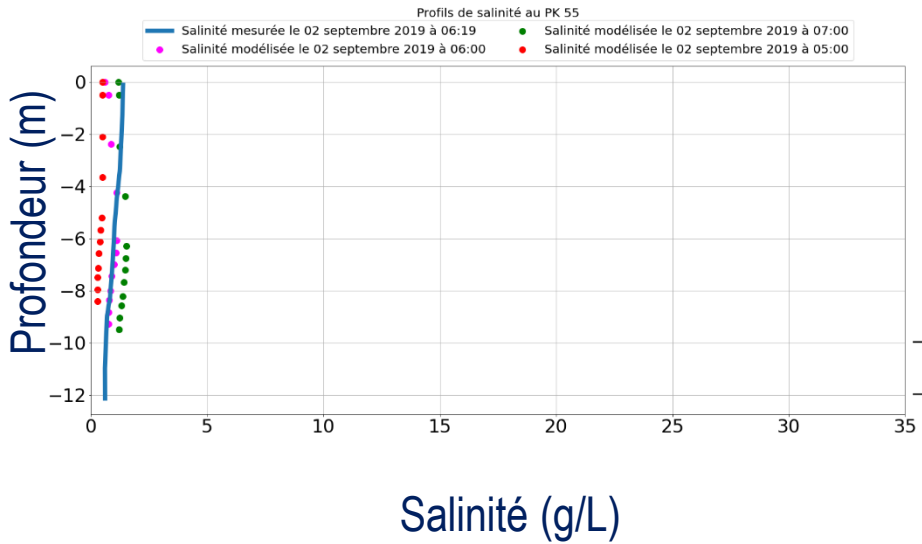


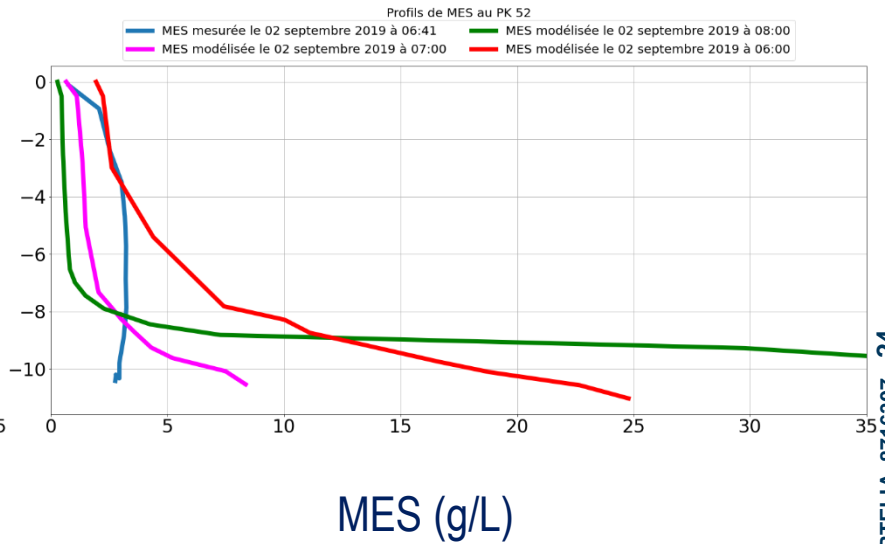
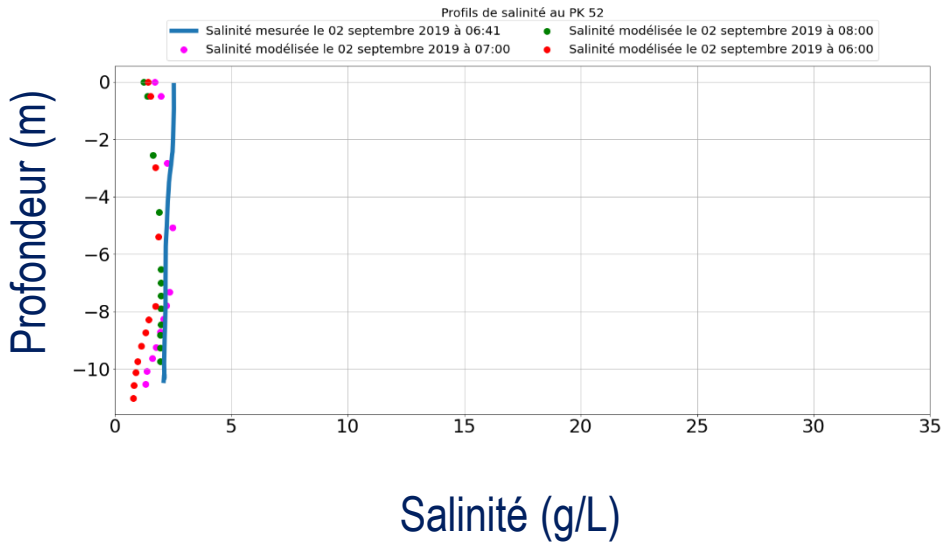


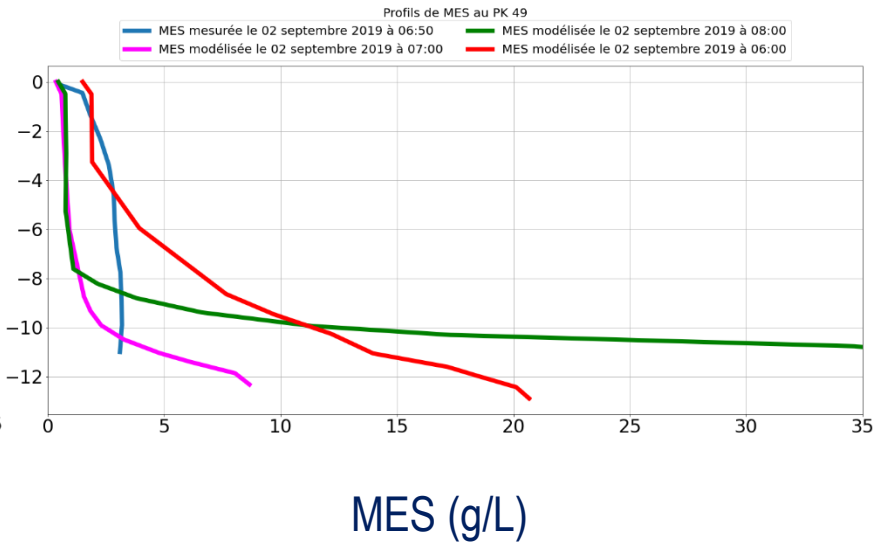
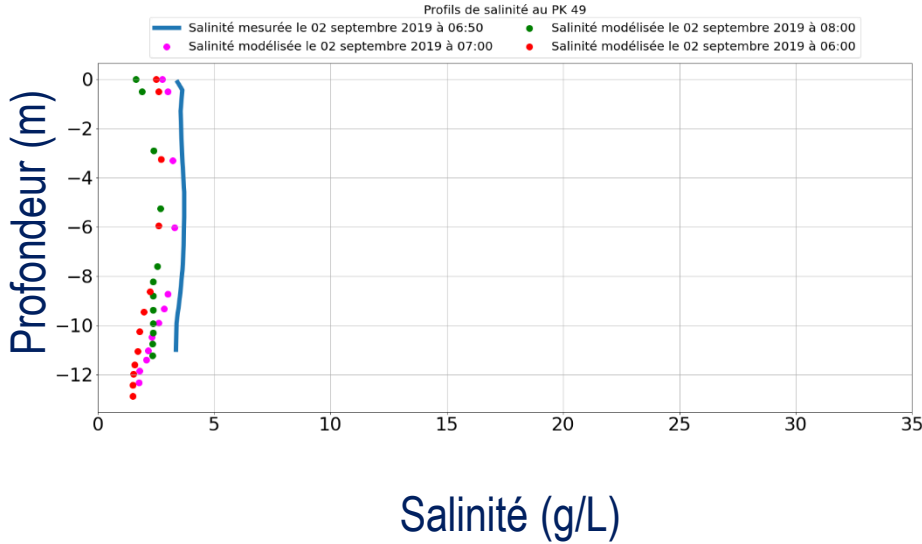
Comparaison aux profils hydrographiques – Septembre 2019

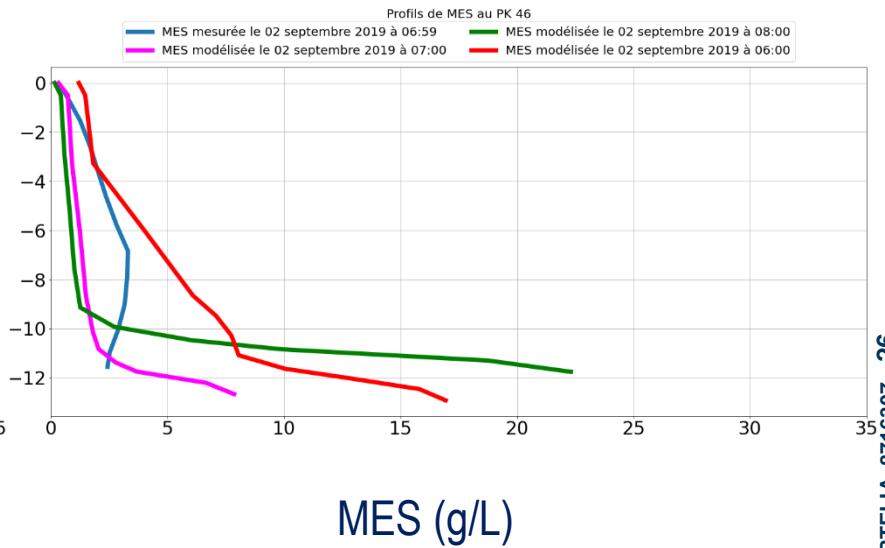
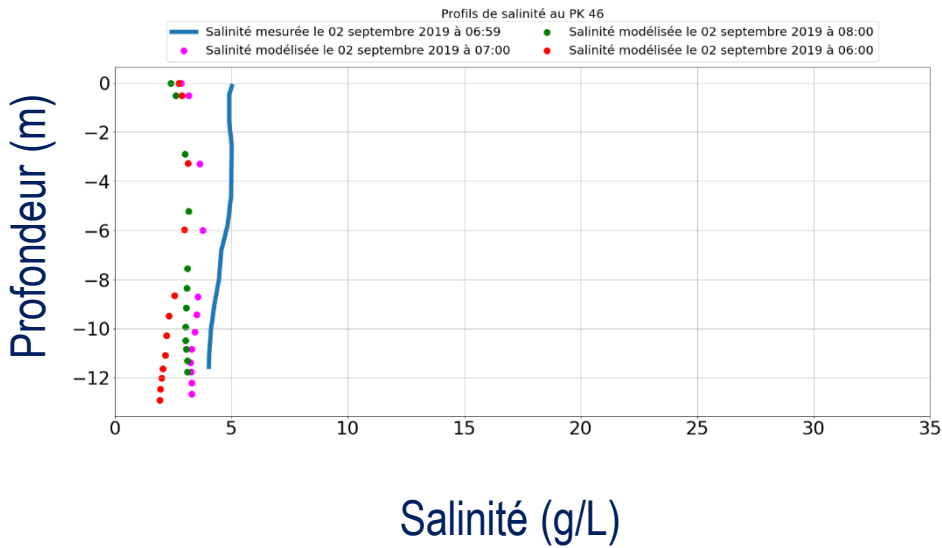


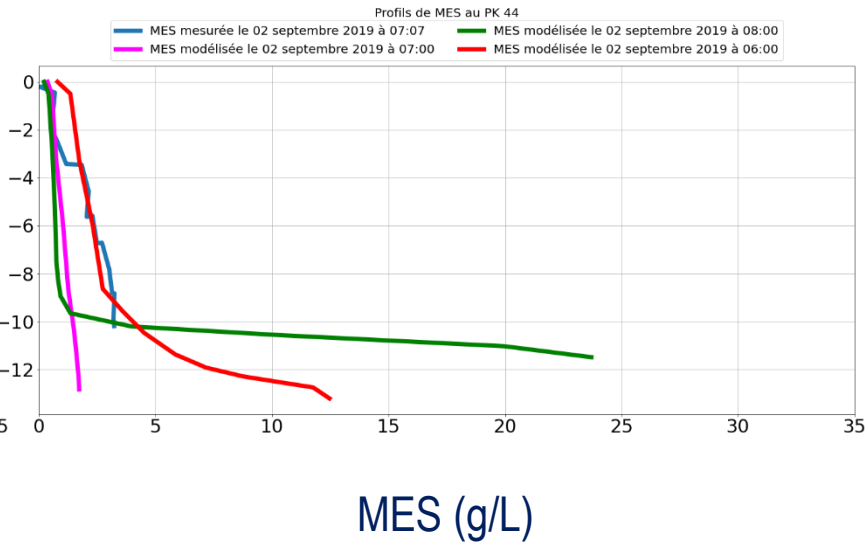
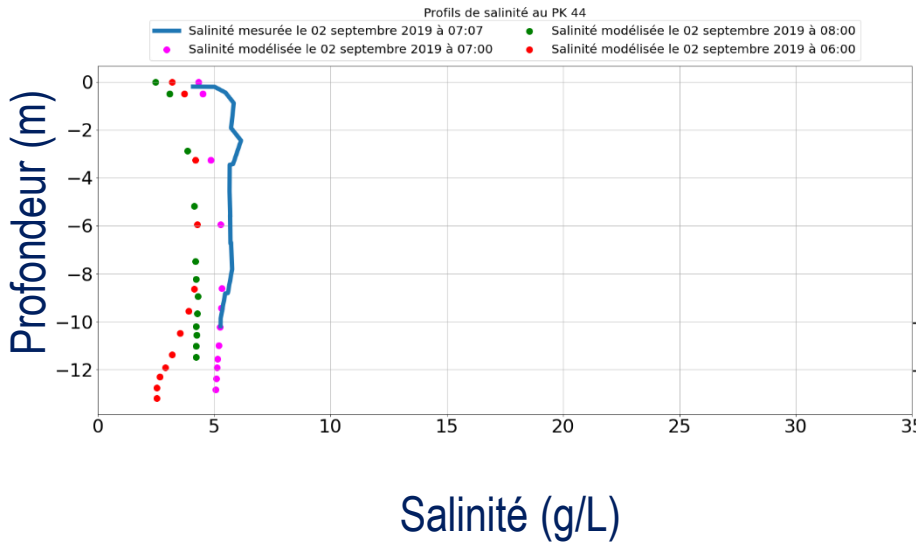


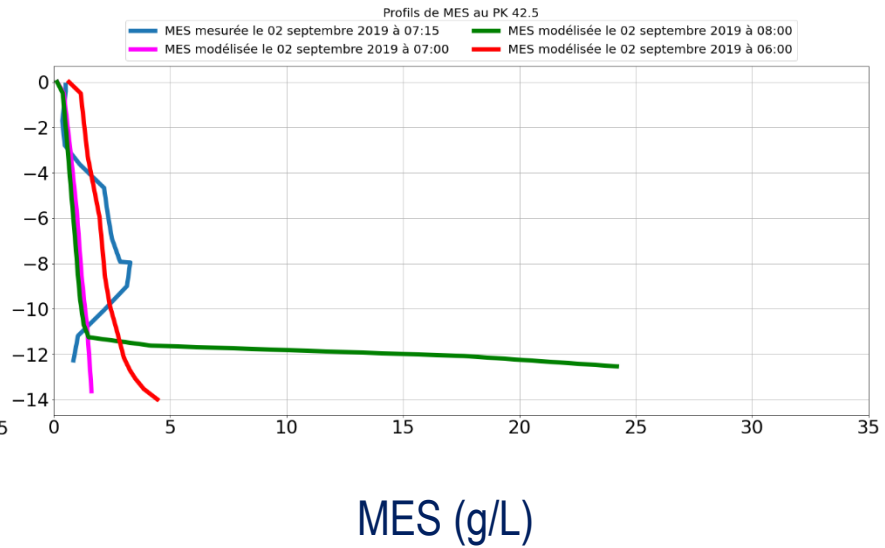
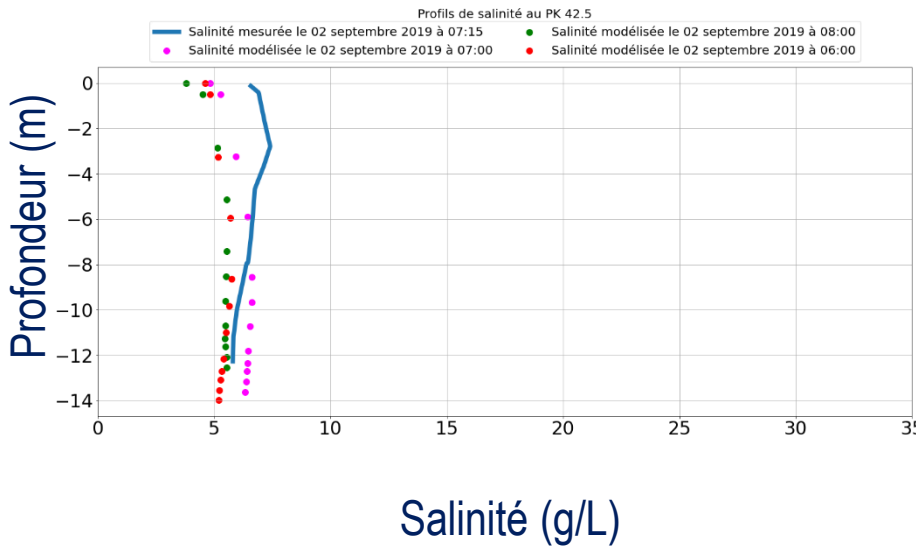


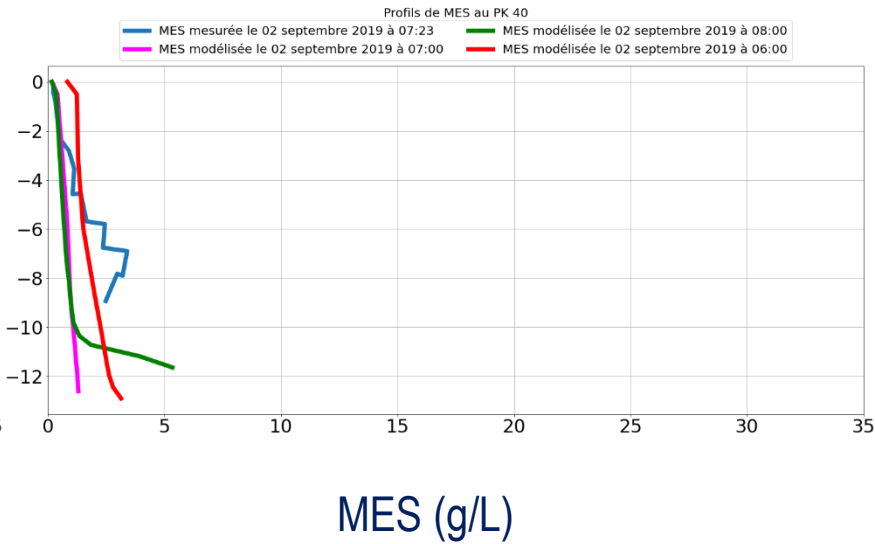
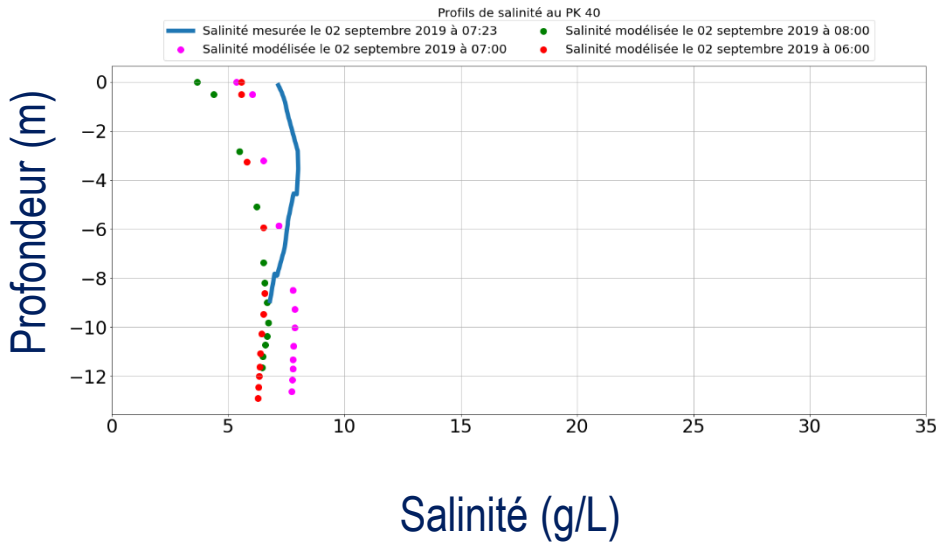


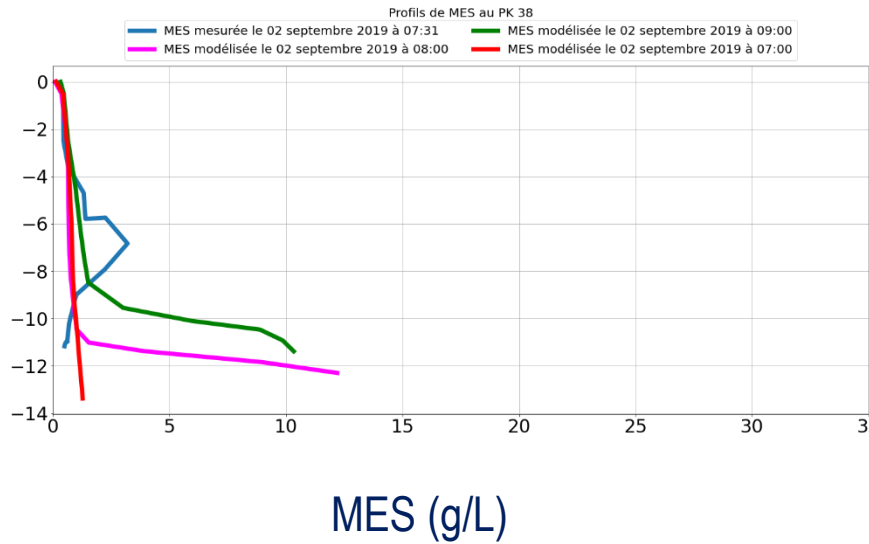
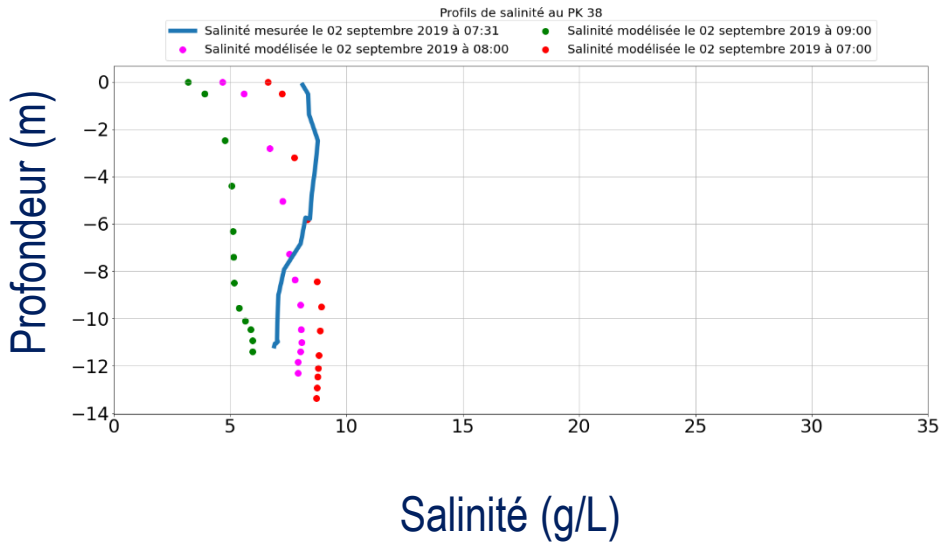


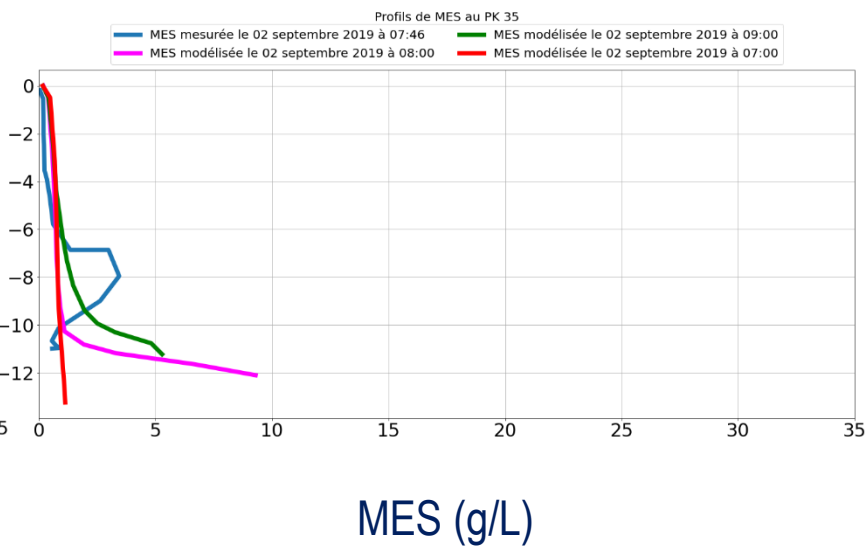
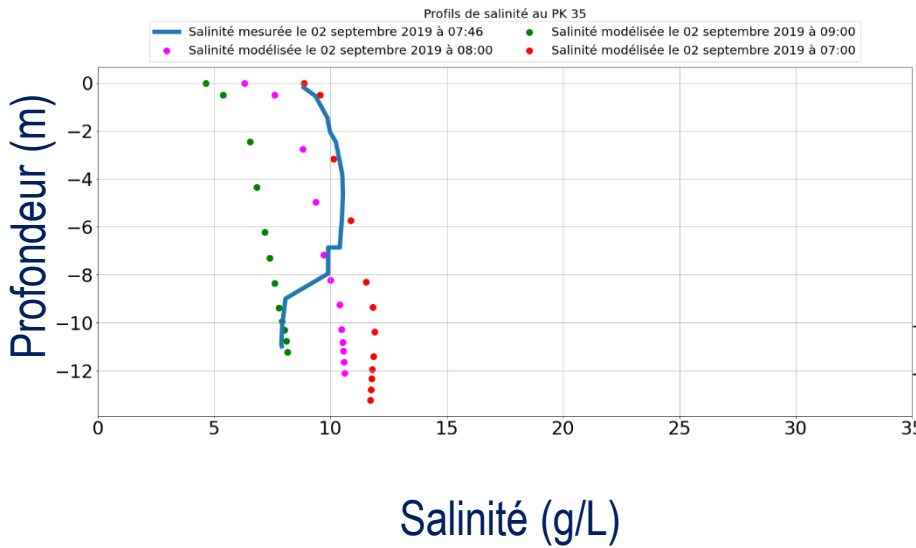


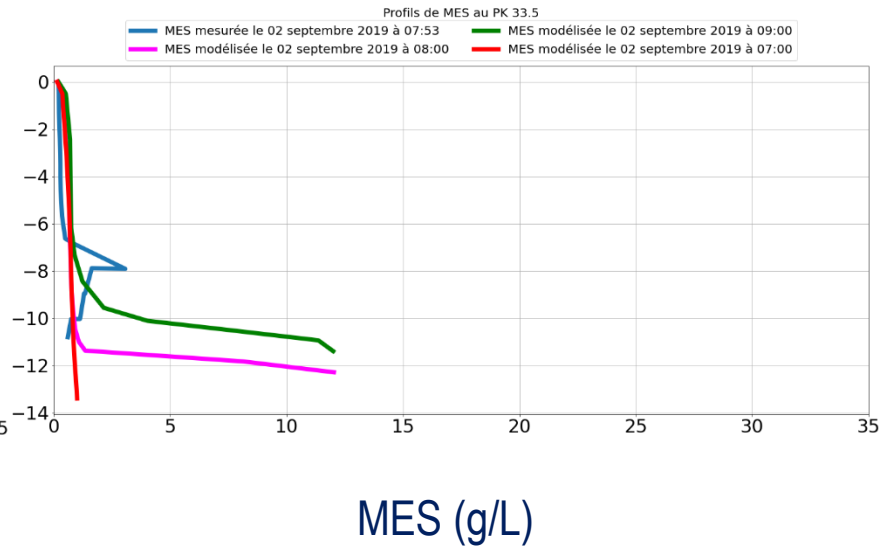
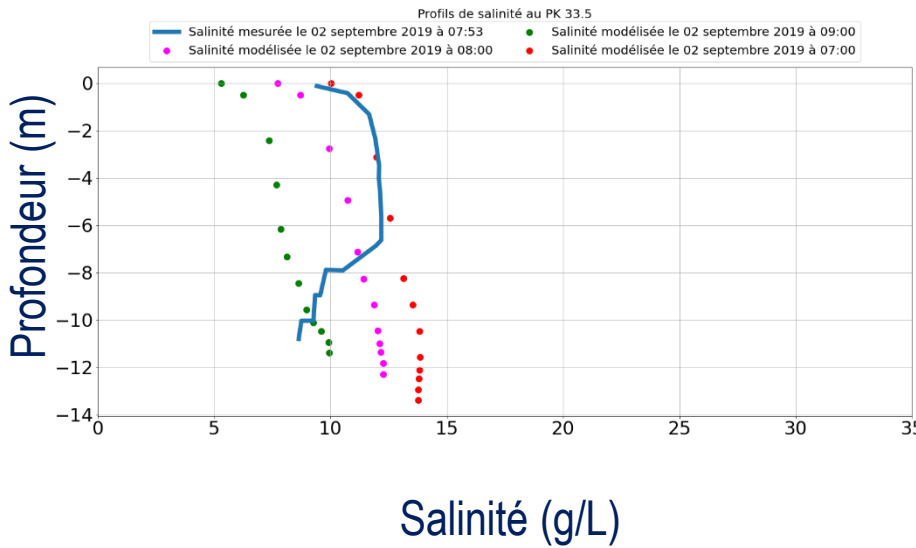


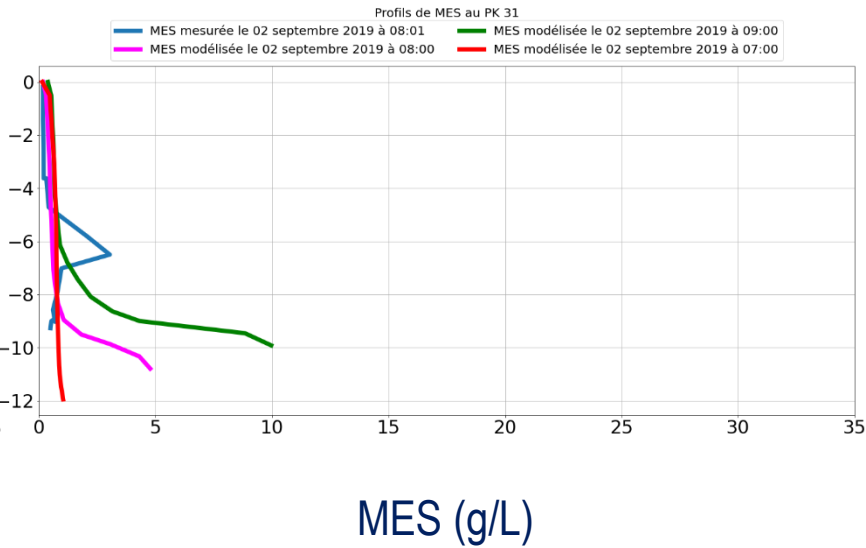
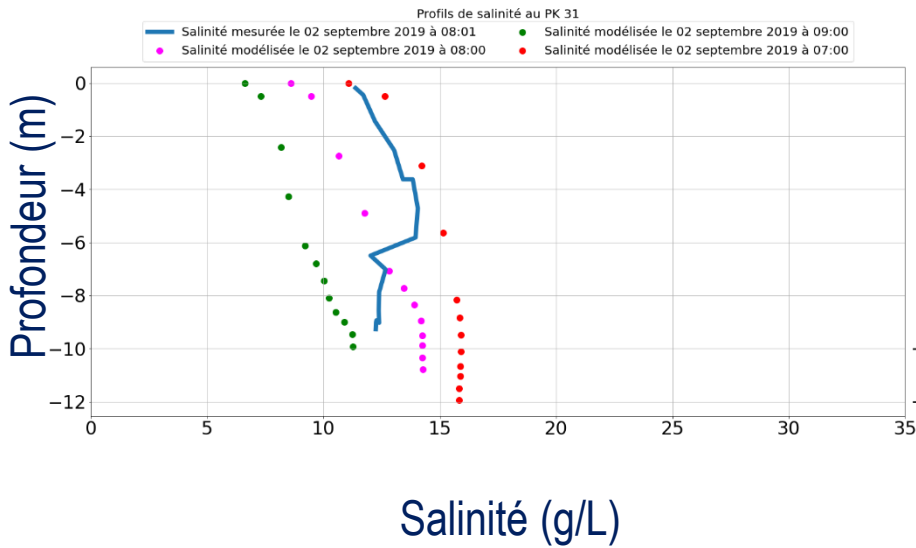


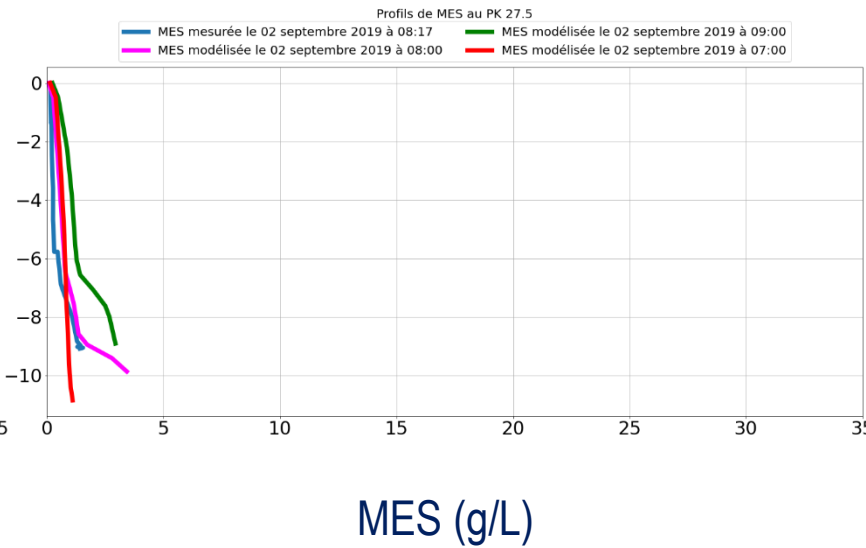
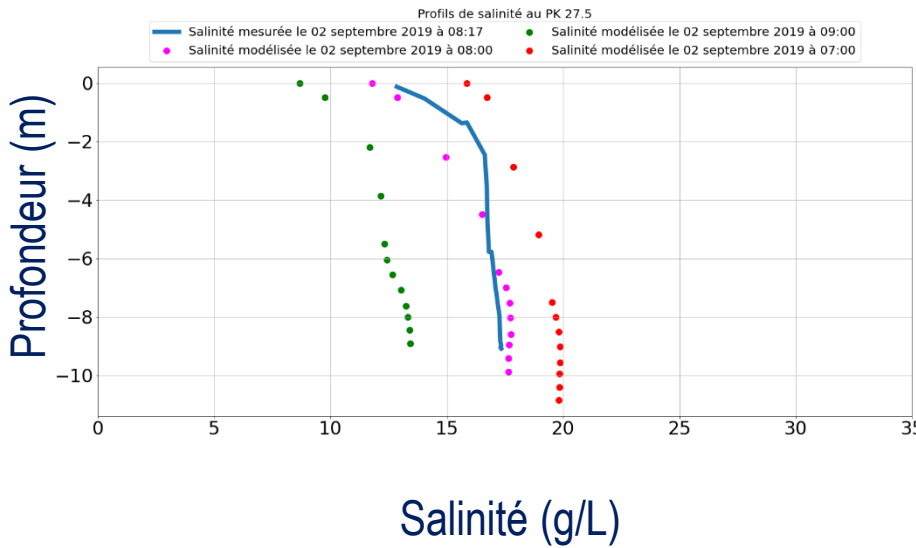


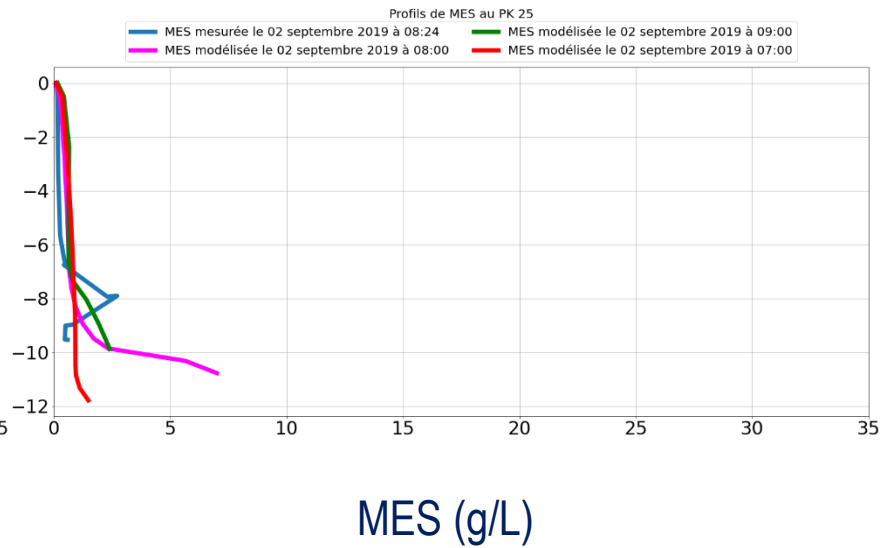
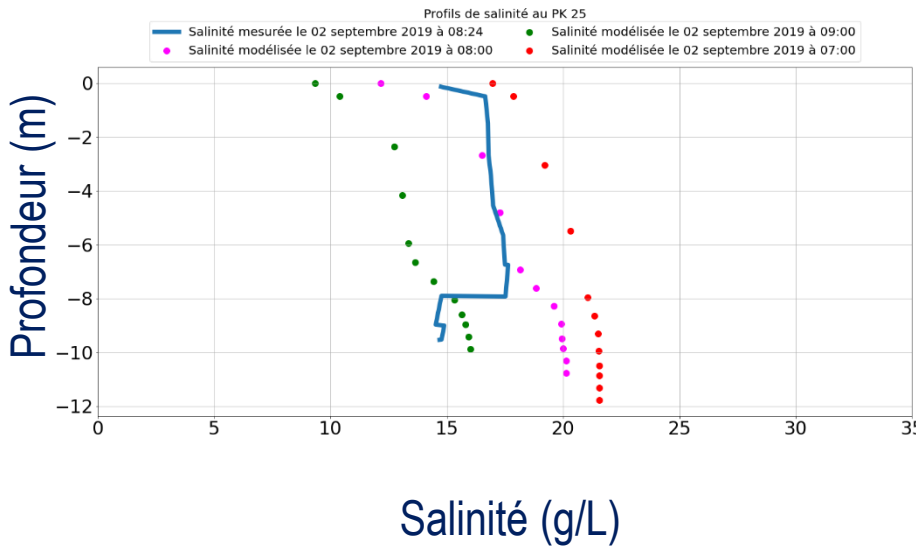


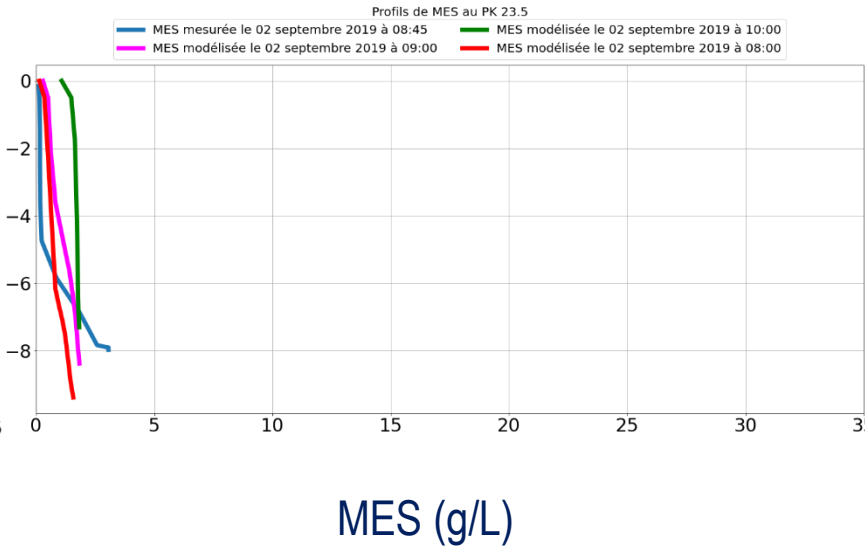
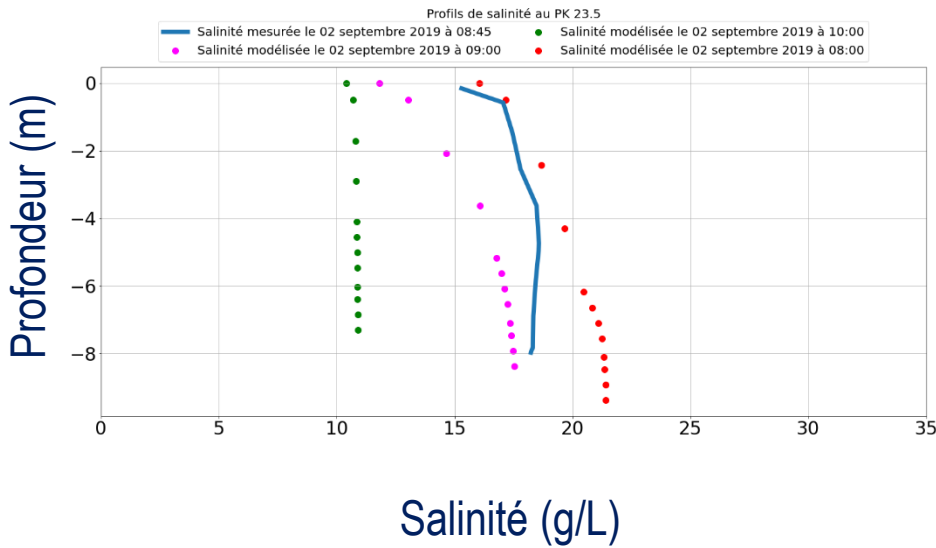


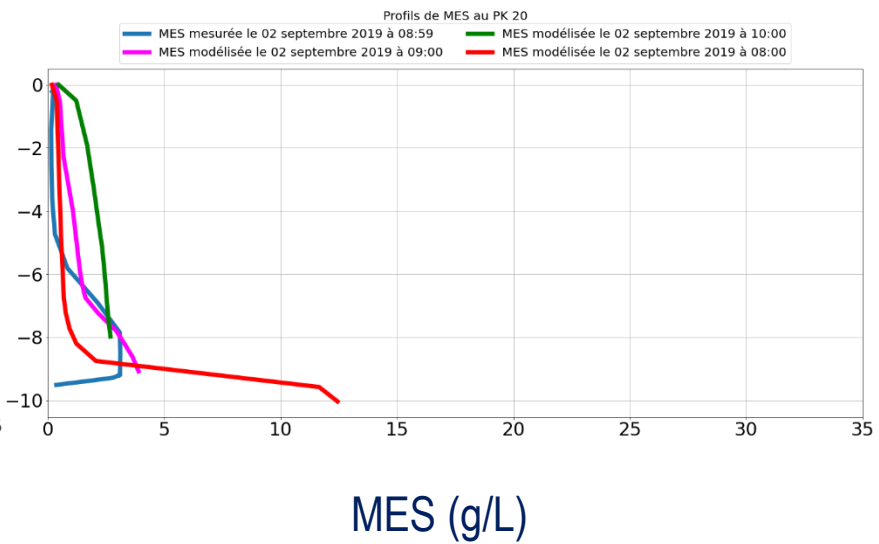
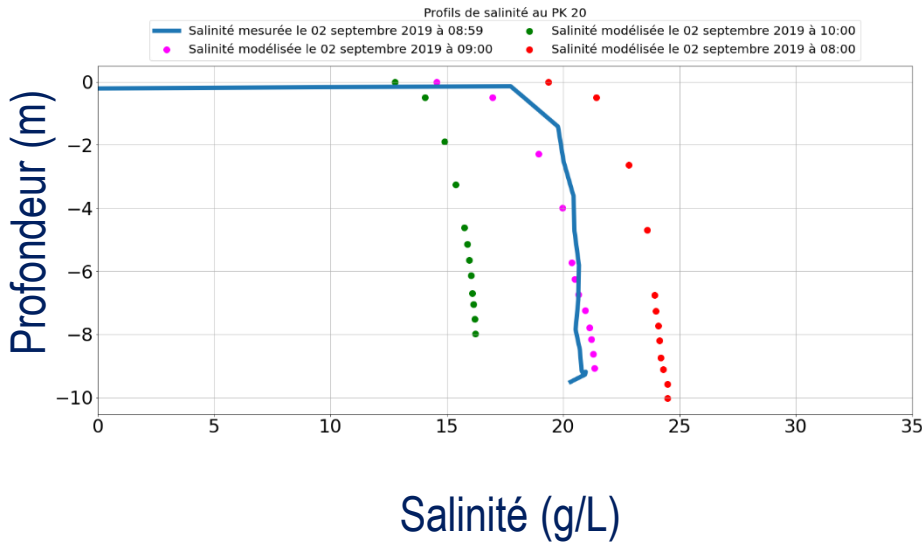


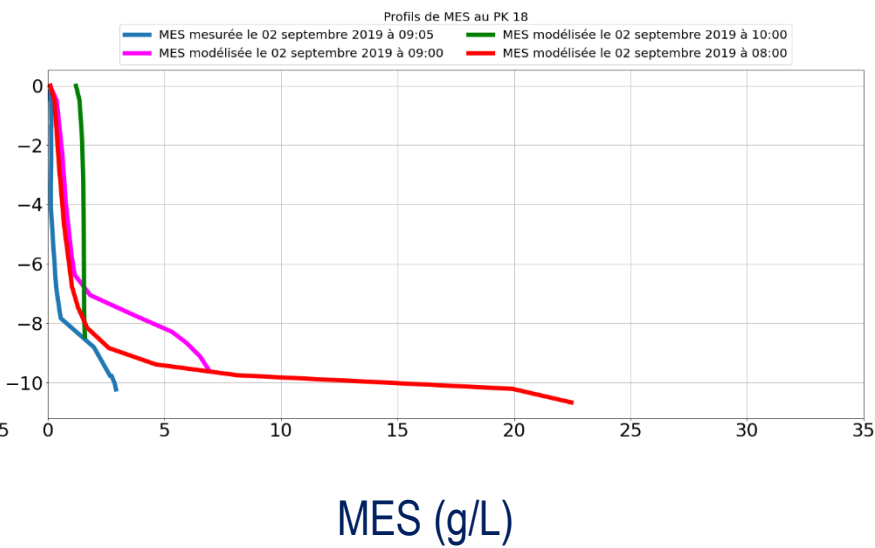
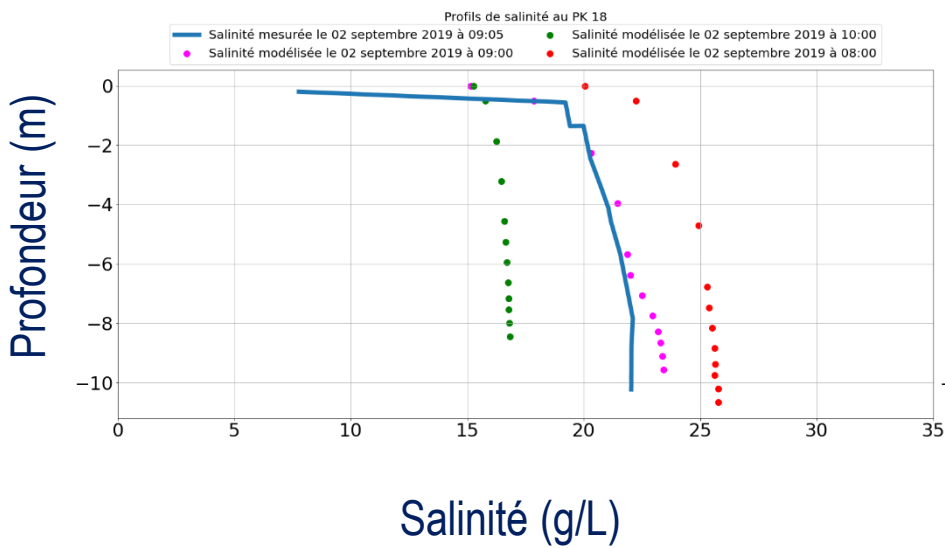


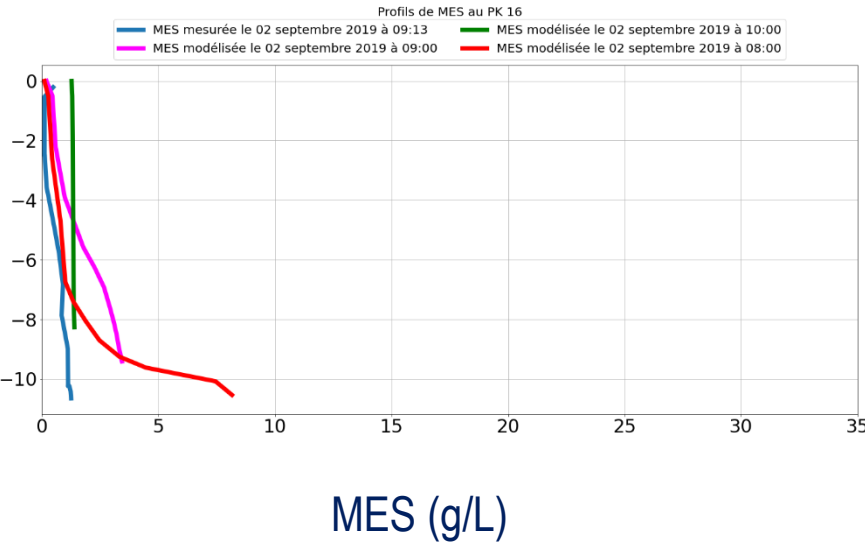
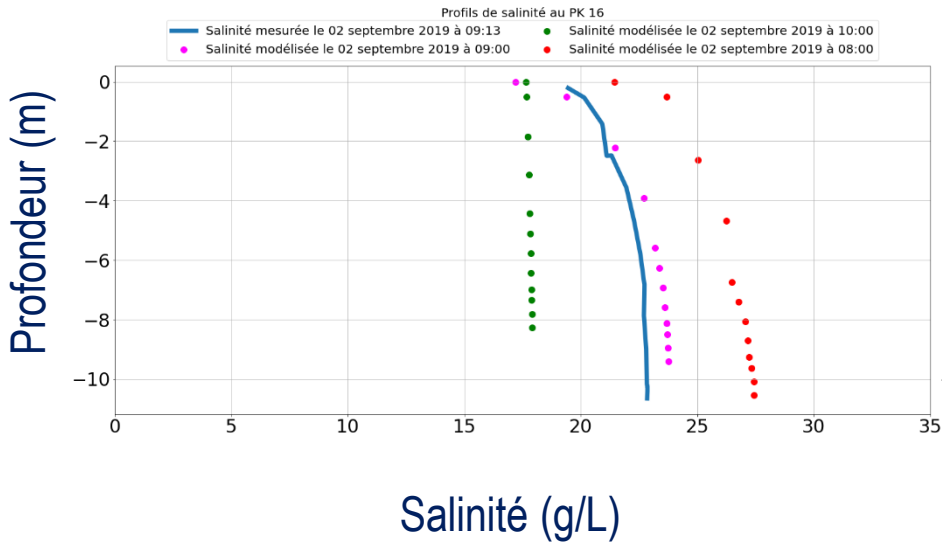


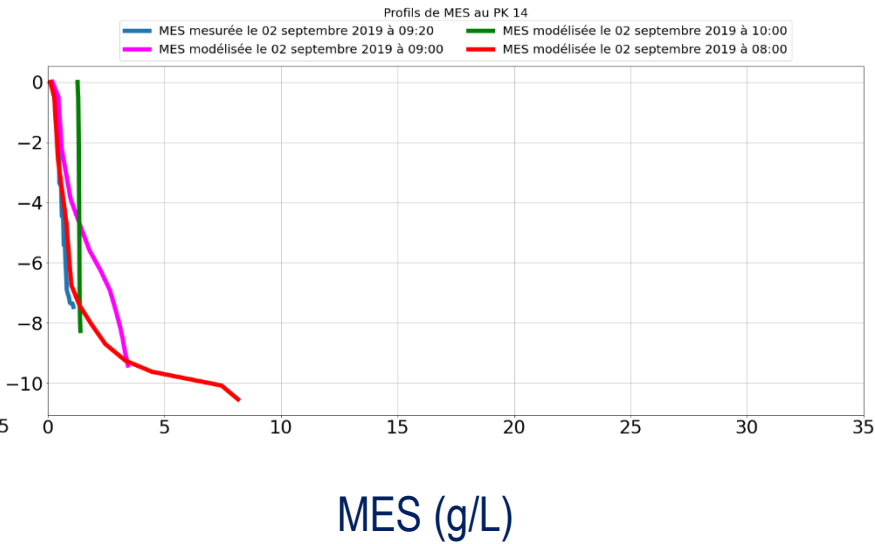
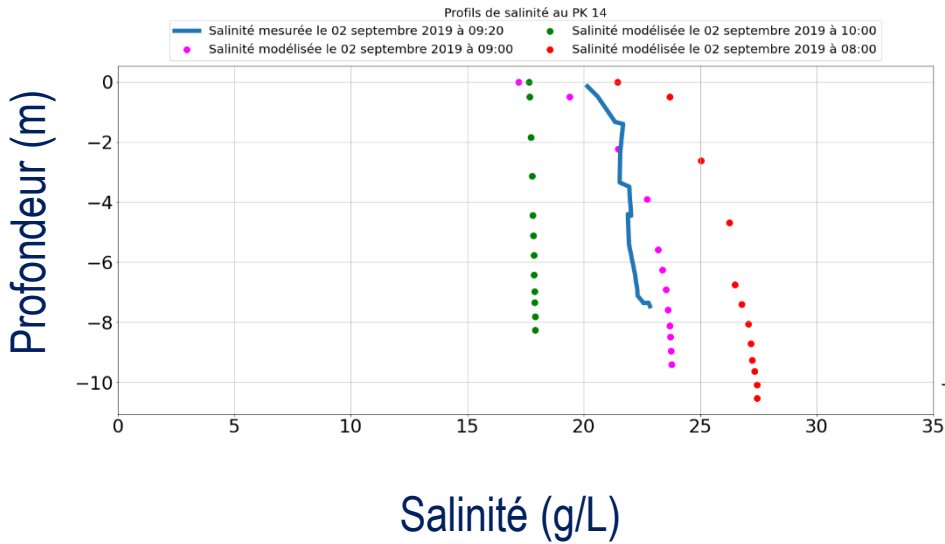


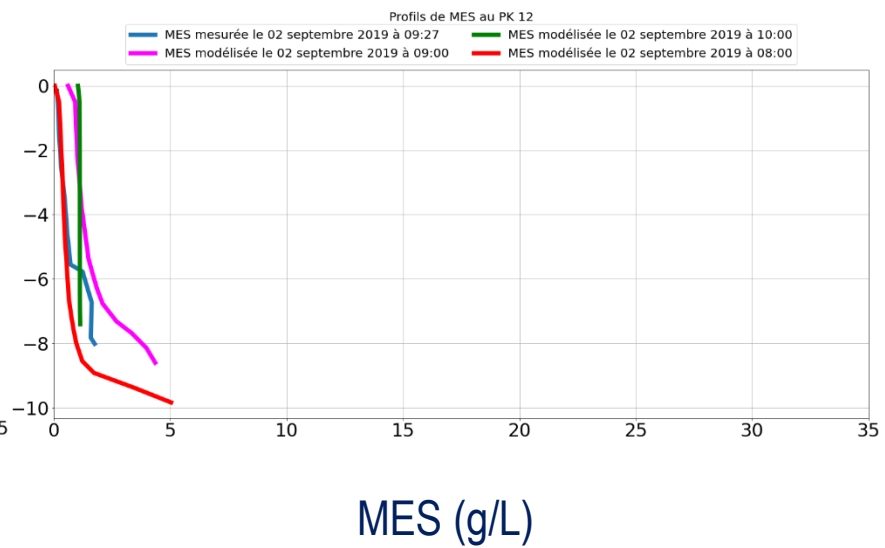
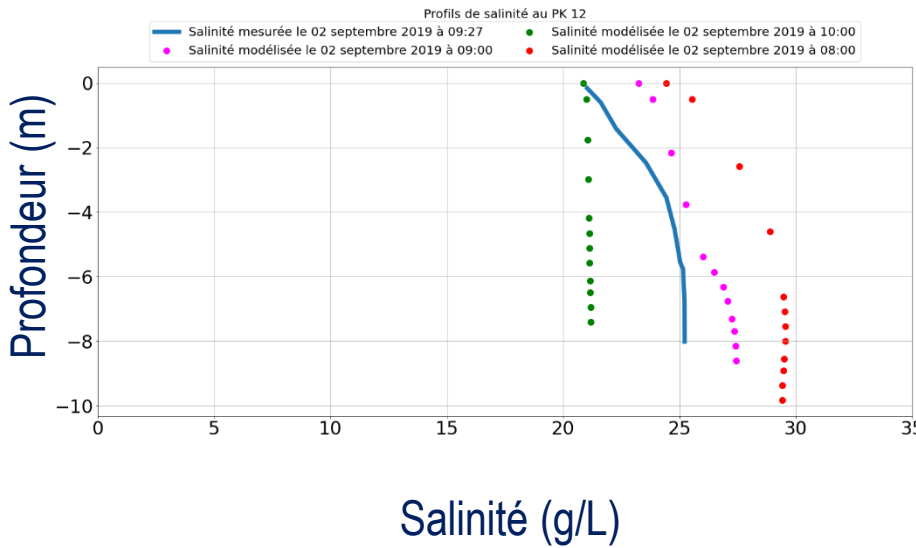


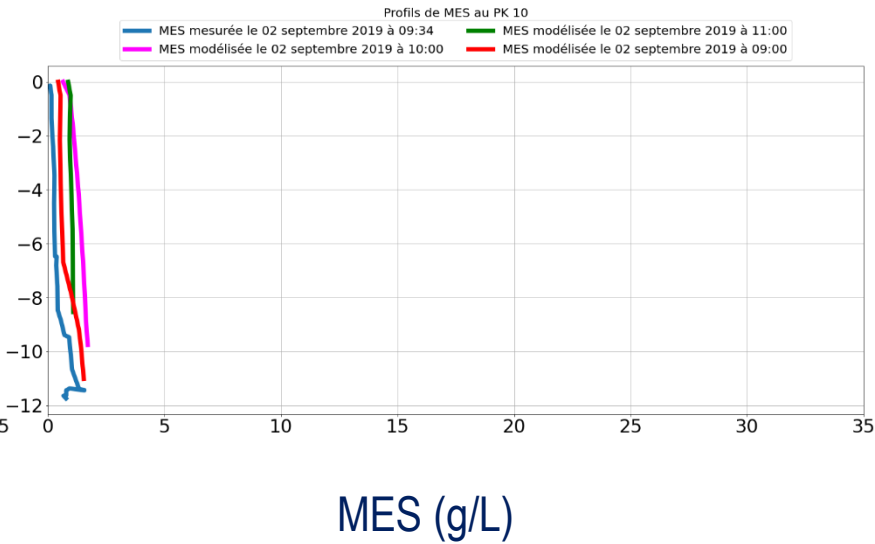
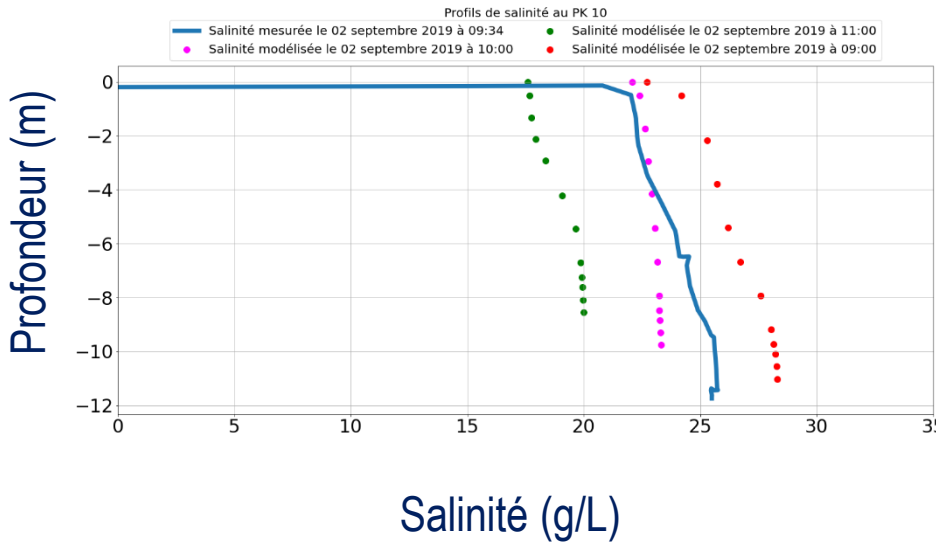


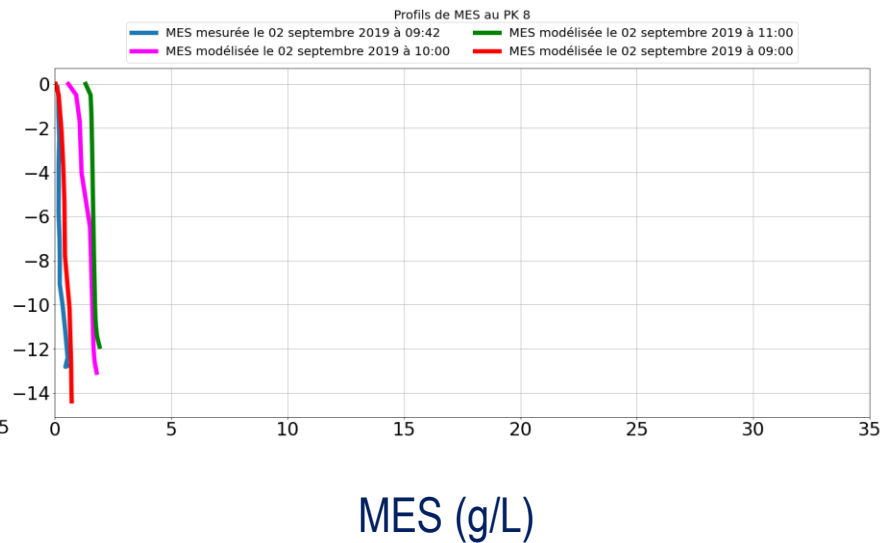
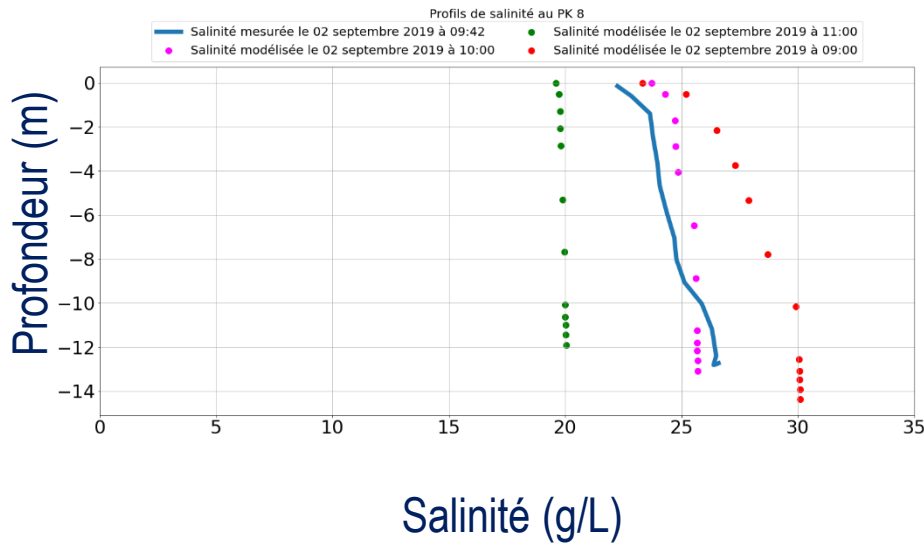


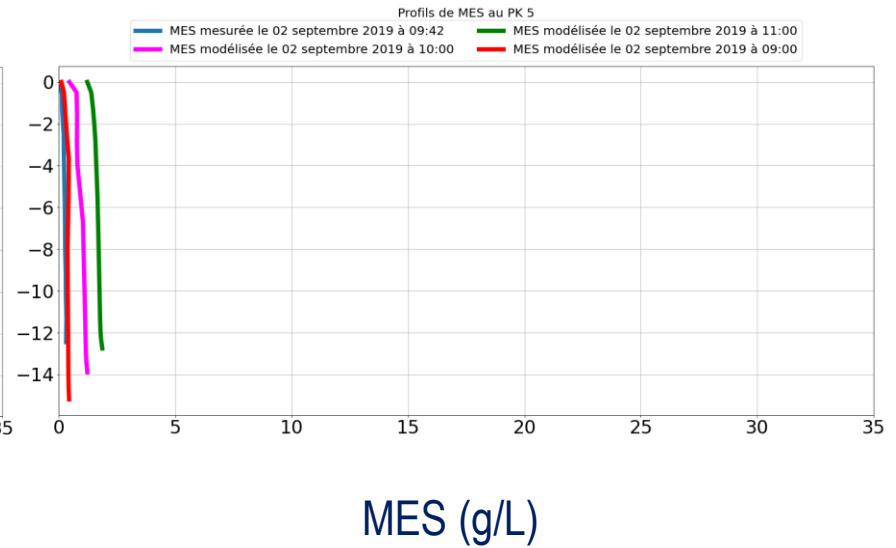
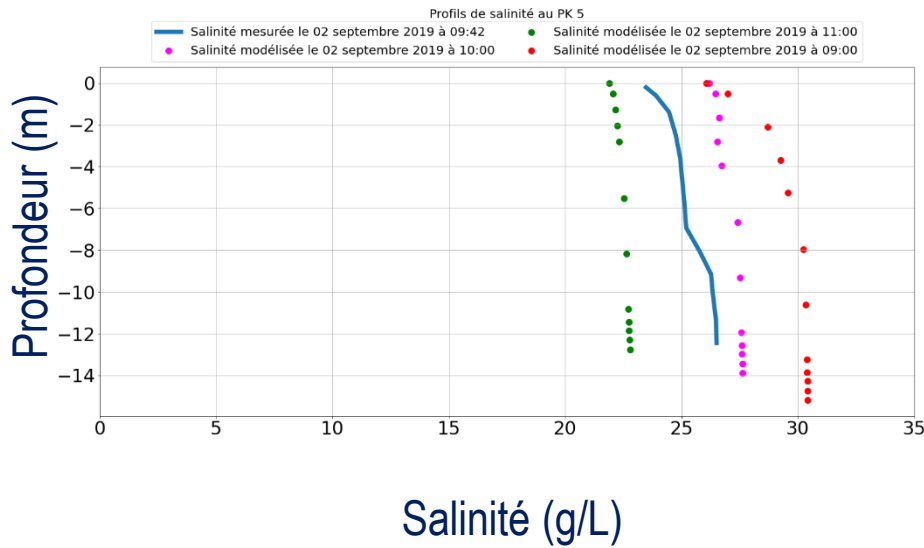


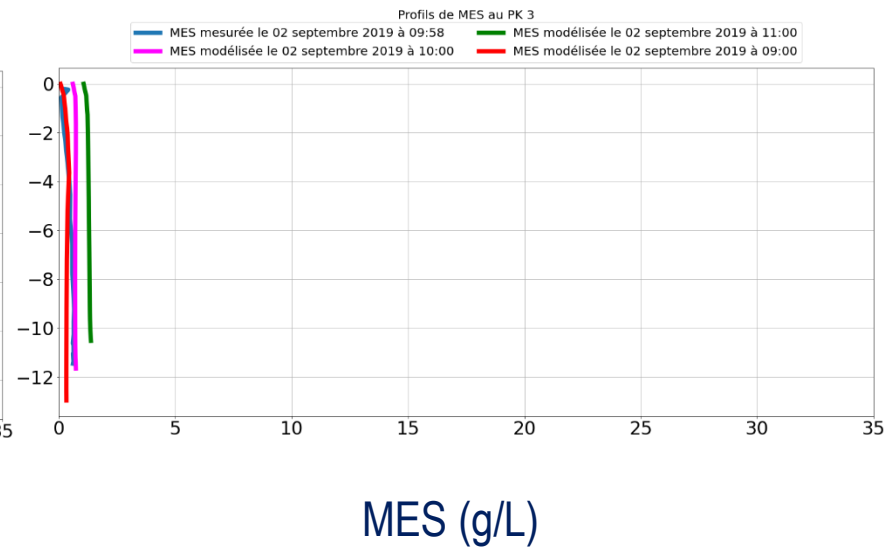
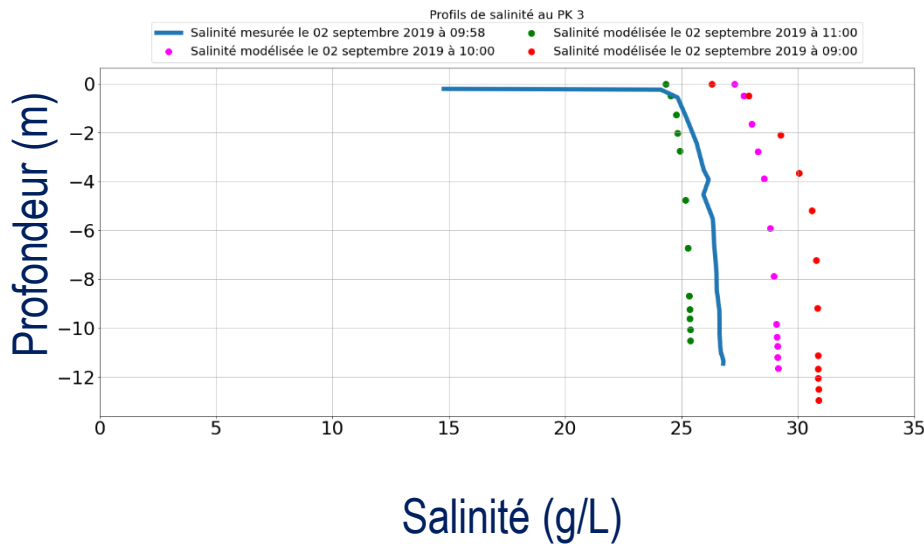


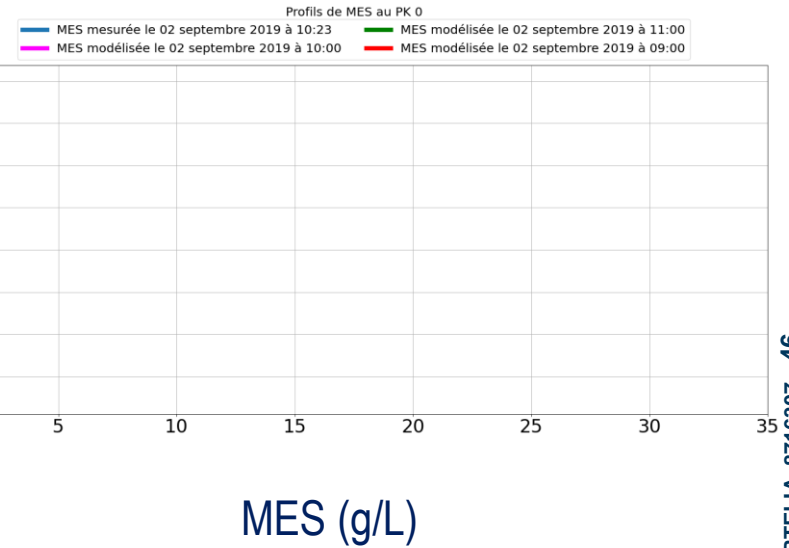
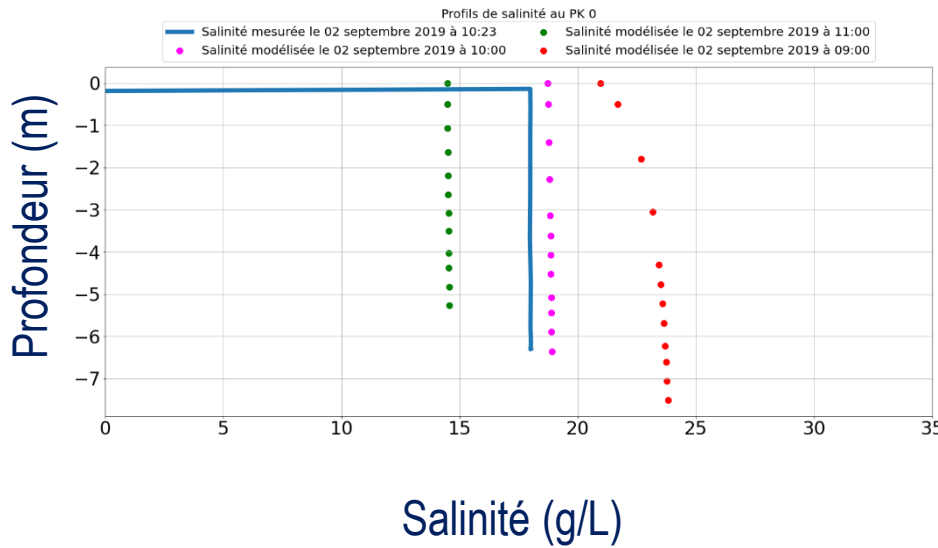














www.arteliagroup.com